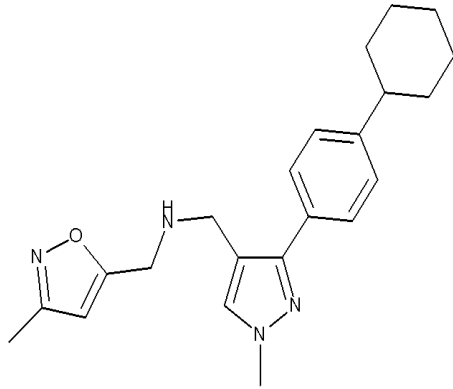


PH10073905



ID 11119041 364.4947 C₂₂H₂₈N₄O



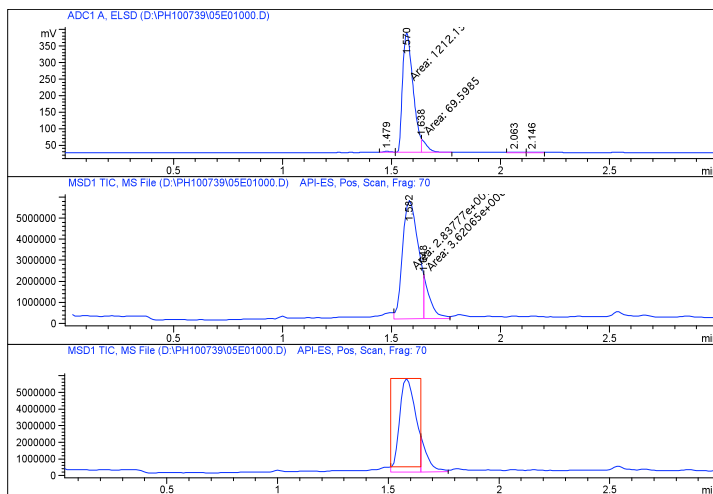
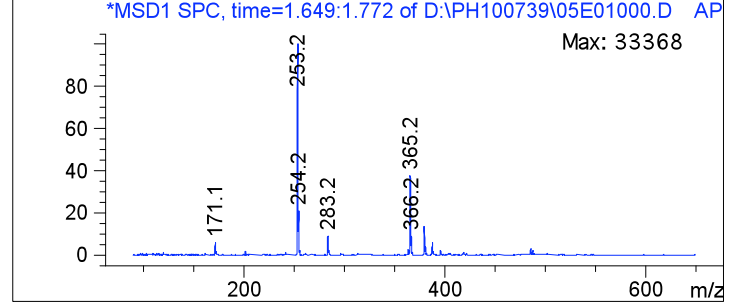
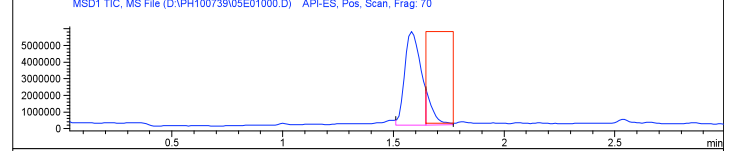
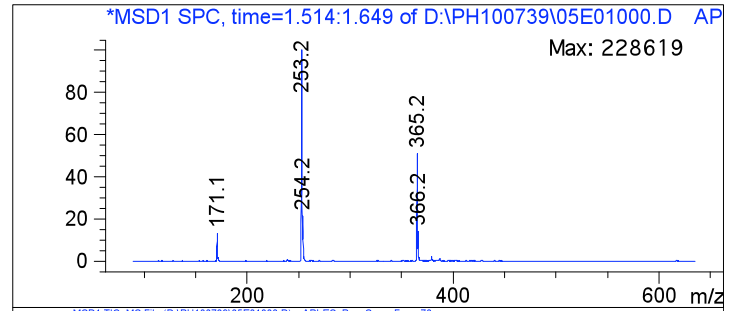
Data File D:\PH100739\05E01000.D Sample Name: PH100739E01
 Instrument 1 27/05/2004 14:48:18 Polyakova Julia
 Column: Chromolith SpeedROD 50x4.6mm | Flow Rate: 3.0ml/min
 Gradient: "A"->@2.0min->"B" (Hold 0.5min)->@0.5min->"A"->PostRun
 PMP1, Solvent A : 0.1% TFA in AcN/Water (5:95)
 PMP1, Solvent B : 0.1% TFA in AcN
 PMP1, Solvent C : 10mM CH3COONH4 in AcN/Water (2.5:97.5)
 PMP1, Solvent D : 10mM CH3COONH4 in AcN/Water (90:10)
 Ionization mode : API-ES Positive

Signal 1: ADC1 A, ELSD

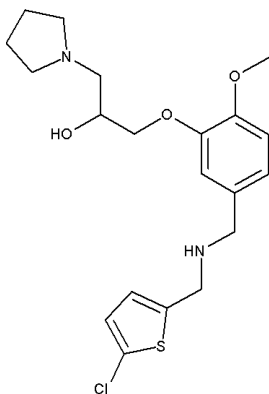
Peak #	RetTime [min]	Type	Width [min]	Area [mV*s]	Height [mV]	Area %
1	1.479	VV	0.0391	8.49092	3.29481	0.6564
2	1.570	MF	0.0559	1212.15088	361.45801	93.7086
3	1.638	FM	0.0278	69.59846	41.78110	5.3805
4	2.063	VV	0.0479	2.12071	5.90186e-1	0.1639
5	2.146	VV	0.0467	1.17101	3.83087e-1	0.0905
Totals :				1293.53198	407.50719	

Signal 2: MSD1 TIC, MS File

Peak #	RetTime [min]	Type	Width [min]	Area	Height	Area %
1	1.582	MF	0.0838	2.83777e7	5.64260e6	88.6849
2	1.648	FM	0.0288	3.62065e6	2.09565e6	11.3151
Totals :				3.19984e7	7.73826e6	



PH10244839



ID	13833666	410.9668	C ₂₀ H ₂₇ ClN ₂ O ₃ S
----	----------	----------	---



Data File R:\AUTO\PH102448\2GE-5001.D
 Sample Name: PH102448P2-G-05
 Instrument 1 13/06/2006 16:38:13
 Column: SpeedROD Rp-18e 50x4.6mm | 3.75ml/min | Columns Reg Valve
 Gradient: "A"->@2.3min->"B"(Hold 0.3min)->@0.1min->"A"->PostRun
 PMP1, Solvent A : 0.1% TFA in AcN/Water (5:95)
 PMP1, Solvent B : 0.1% TFA in AcN
 PMP1, Solvent C : 10mM CH₃COONH₄ in AcN/Water (2.5:75.5)
 PMP1, Solvent D : 10mM CH₃COONH₄ in AcN/Water (90:10)
 Ionization mode : API-ES Positive

Signal 1: ADC1 A, ELSD

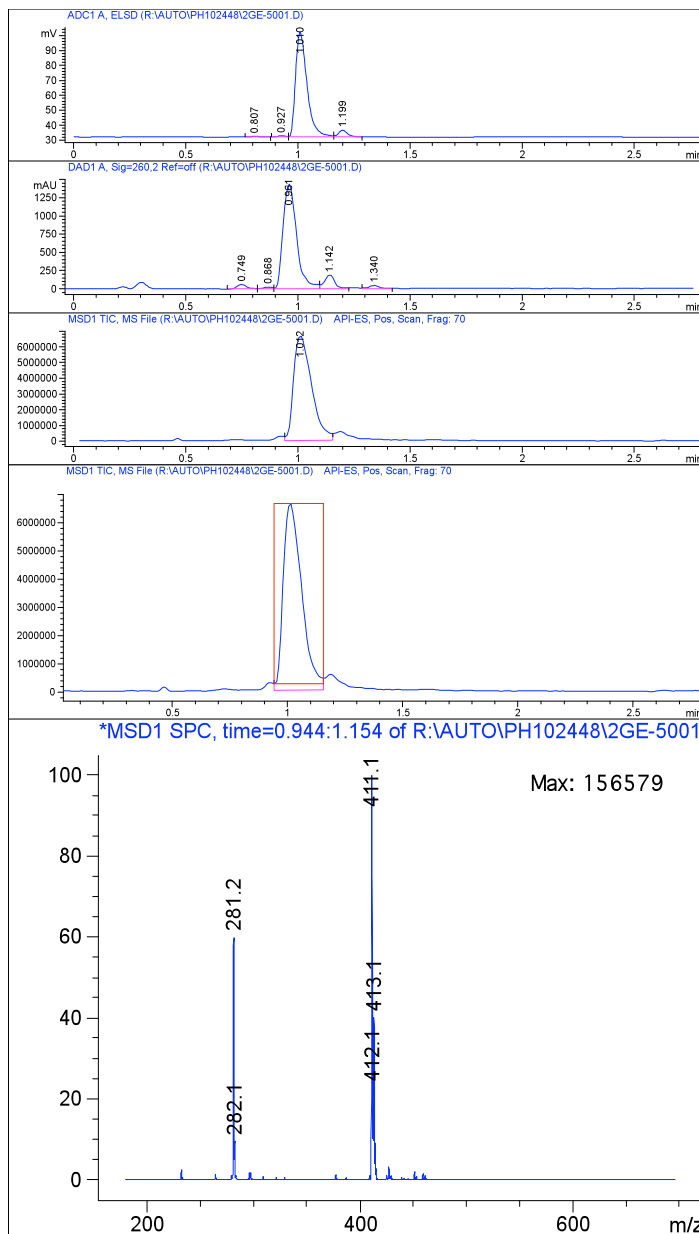
Peak #	RetTime [min]	Type	Width [min]	Area [mV*s]	Height [mV]	Area %
1	0.807	PB	0.0384	1.19152	4.72833e-1	0.4514
2	0.927	PV	0.0349	1.99263	8.99059e-1	0.7549
3	1.010	VV	0.0555	248.51721	69.88328	94.1444
4	1.199	VB	0.0422	12.27314	4.45204	4.6494
Totals :				263.97450	75.70721	

Signal 2: DAD1 A, Sig=260,2 Ref=off

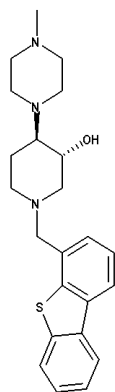
Peak #	RetTime [min]	Type	Width [min]	Area [mAU*s]	Height [mAU]	Area %
1	0.749	VV	0.0481	196.19357	63.33427	2.7292
2	0.868	VV	0.0450	77.35856	27.32673	1.0761
3	0.961	VV	0.0675	6097.19727	1438.10352	84.8173
4	1.142	VB	0.0513	637.39398	189.44868	8.8667
5	1.340	BB	0.0570	180.47702	46.75051	2.5106
Totals :				7188.62040	1764.96372	

Signal 3: MSD1 TIC, MS File

Peak #	RetTime [min]	Type	Width [min]	Area	Height	Area %
1	1.012	VV	0.0809	3.69822e7	6.62271e6	100.0000
Totals :				3.69822e7	6.62271e6	



PH10205241



ID	14070035	395.5711	C ₂₃ H ₂₉ N ₃ OS

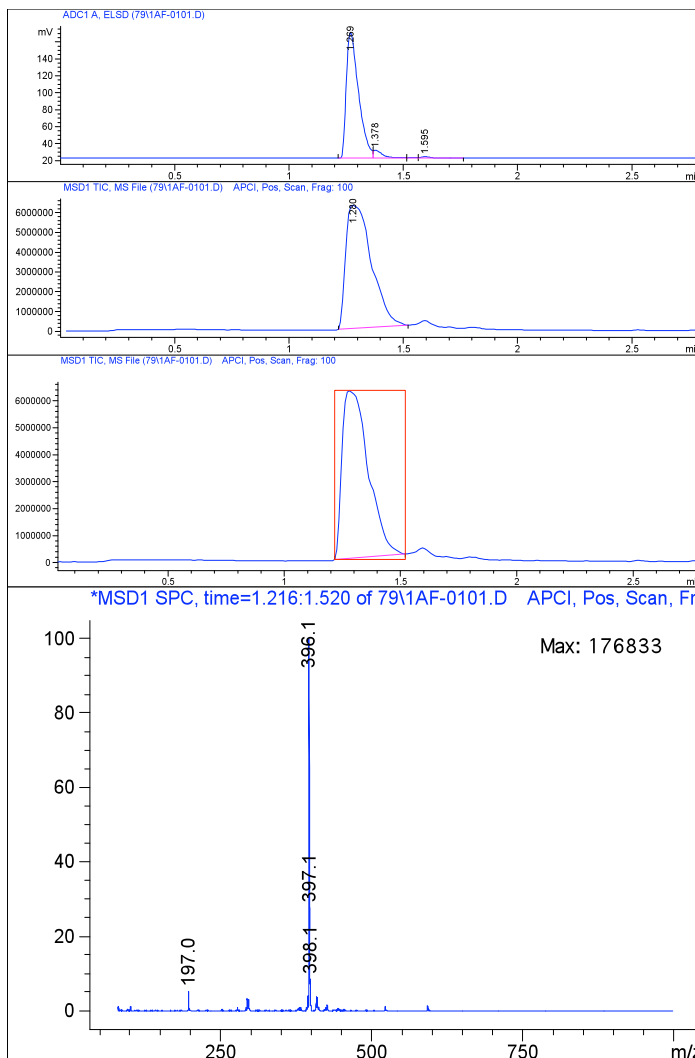
Data File D:\LCMS4\79\1AF-0101.D
 Sample Name: PH102052P1-A-06
 Instrument 1 31/01/06 03:47:47 LCMS#4
 Column: Chromolith SpeedROD C18 50x4.6mm | 3.75ml/min
 Gradient: "A"->@2.4min->"B"(Hold 0.3min)->@0.1min->"A"->PostRun
 PMP1, Solvent A : 0.1% TFA in AcN/Water (5:95)
 PMP1, Solvent B : 0.1% TFA in AcN
 PMP1, Solvent C : 10mM CH3COONH4 in AcN/Water (2.5:75.5)
 PMP1, Solvent D : 10mM CH3COONH4 in AcN/Water (90:10)
 Ionization mode : APCI Positive

Signal 1: ADC1 A, ELSD

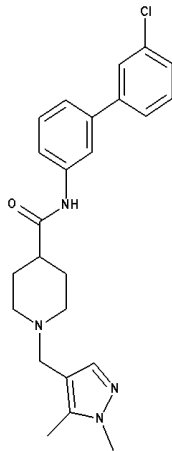
Peak #	RetTime [min]	Type	Width [min]	Area [mV*s]	Height [mV]	Area %
1	1.269	PV	0.0554	551.71088	148.37433	94.6033
2	1.378	VV	0.0408	25.17862	8.95977	4.3174
3	1.544	VV	0.0340	1.53761	6.91187e-1	0.2637
4	1.595	VP	0.0434	4.75664	1.61460	0.8156
Totals :				583.18375	159.63989	

Signal 2: MSD1 TIC, MS File

Peak #	RetTime [min]	Type	Width [min]	Area	Height	Area %
1	1.280	PBA	0.1047	4.84714e7	6.22410e6	100.0000
Totals :				4.84714e7	6.22410e6	



PH10133215



ID 17189319 422.9620 C₂₄H₂₇ClN₄O



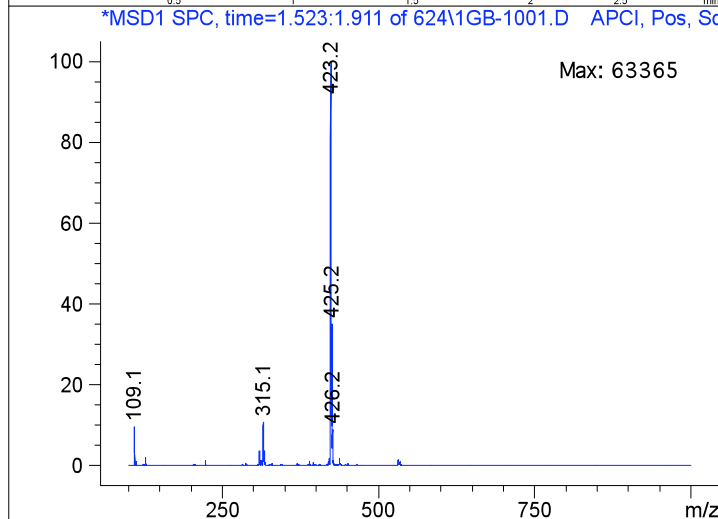
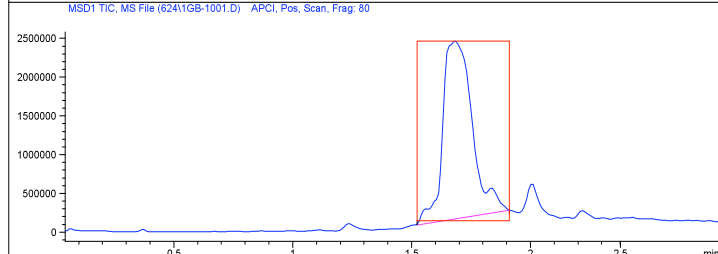
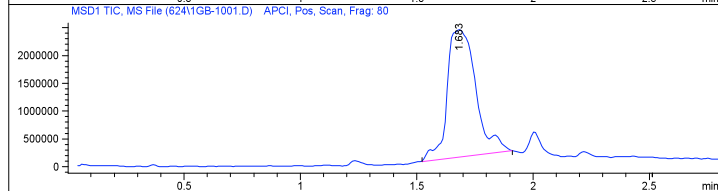
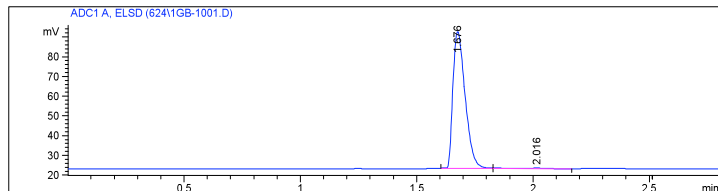
Data File d:\LCMS\Batch73\624\1GB-1001.D Sample Name: PH101332P1-G-02
 Instrument 1 07/02/2005 10:33:45 LCMS#1
 Column: Chromolith SpeedROD C18 50x4.6mm | 3.75ml/min
 Gradient: "A"->@2.4min->"B" (Hold 0.3min)->@0.1min->"A"->PostRun
 PMP1, Solvent A : 0.1% TFA in AcN/Water (5:95)
 PMP1, Solvent B : 0.1% TFA in AcN
 PMP1, Solvent C : 10mM CH3COONH4 in AcN/Water (2.5:75.5)
 PMP1, Solvent D : 10mM CH3COONH4 in AcN/Water (90:10)
 Ionization mode : APCI Positive

Signal 1: ADC1 A, ELSD

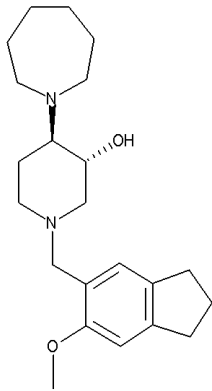
Peak #	RetTime [min]	Type	Width [min]	Area [mV*s]	Height [mV]	Area %
1	1.676	BV	0.0578	254.25418	69.38505	99.1922
2	2.016	VP	0.0744	2.07064	3.69307e-1	0.8078
Totals :				256.32482	69.75435	

Signal 2: MSD1 TIC, MS File

Peak #	RetTime [min]	Type	Width [min]	Area	Height	Area %
1	1.683	PBA	0.1086	1.97466e7	2.29271e6	100.0000
Totals :				1.97466e7	2.29271e6	



PH10205433



ID	18311942	358.5285	C ₂₂ H ₃₄ N ₂ O ₂

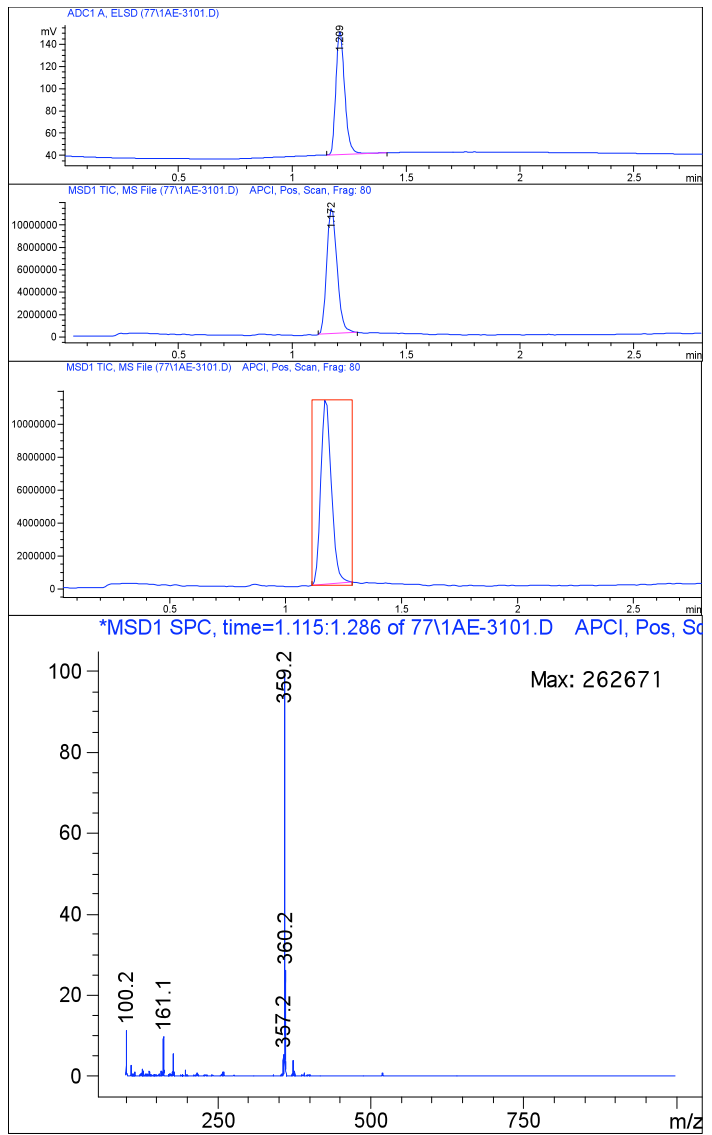
Data File C:\HPCHEM\1\DATA\77\1AE-3101.D
 Sample Name: PH102054P1-A-05
 Instrument 1 31/01/2006 08:32:14 LCMS#6
 Column: Hi-Q C18 5um 50x4.6mm | 3.75ml/min
 Gradient: "A"->@2.4min->"B"(Hold 0.3min)->@0.1min->"A"->PostRun
 PMP1, Solvent A : 0.1% TFA in AcN/Water (5:95)
 PMP1, Solvent B : 0.1% TFA in AcN
 PMP1, Solvent C : 10mM CH3COONH4 in AcN/Water (2.5:75.5)
 PMP1, Solvent D : 10mM CH3COONH4 in AcN/Water (90:10)
 Ionization mode : APCI Positive

Signal 1: ADC1 A, ELSD

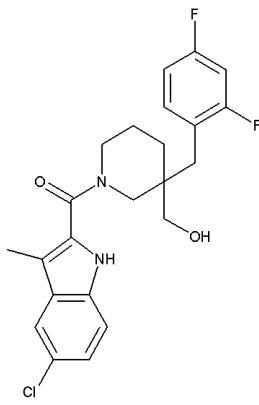
Peak #	RetTime [min]	Type	Width [min]	Area [mV*s]	Height [mV]	Area %
1	1.209	BB	0.0415	299.02695	110.89252	100.0000
Totals :				299.02695	110.89252	

Signal 2: MSD1 TIC, MS File

Peak #	RetTime [min]	Type	Width [min]	Area	Height	Area %
1	1.172	PBA	0.0504	3.57091e7	1.12971e7	100.0000
Totals :				3.57091e7	1.12971e7	



PH10196803



ID	23818445	432.9018	C ₂₃ H ₂₃ ClF ₂ N ₂ O ₂
----	----------	----------	--

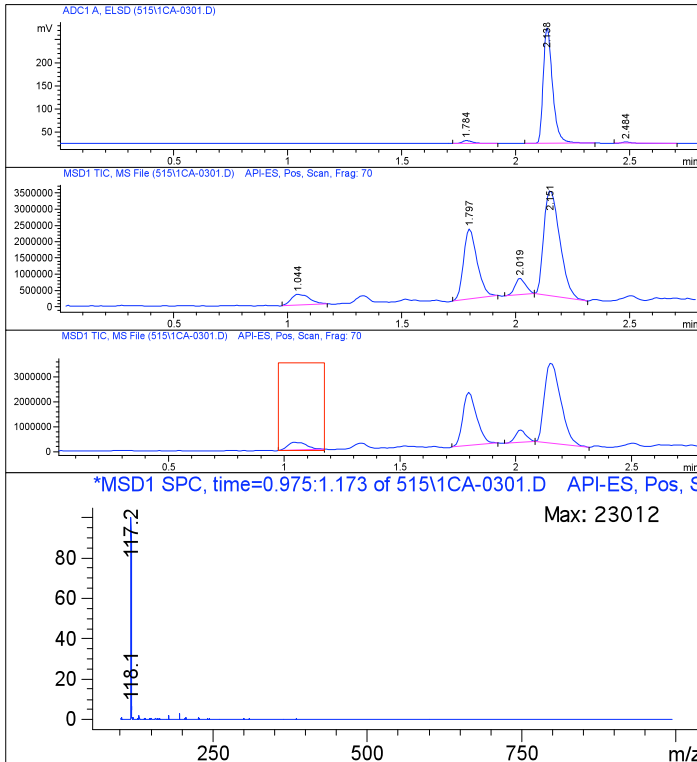
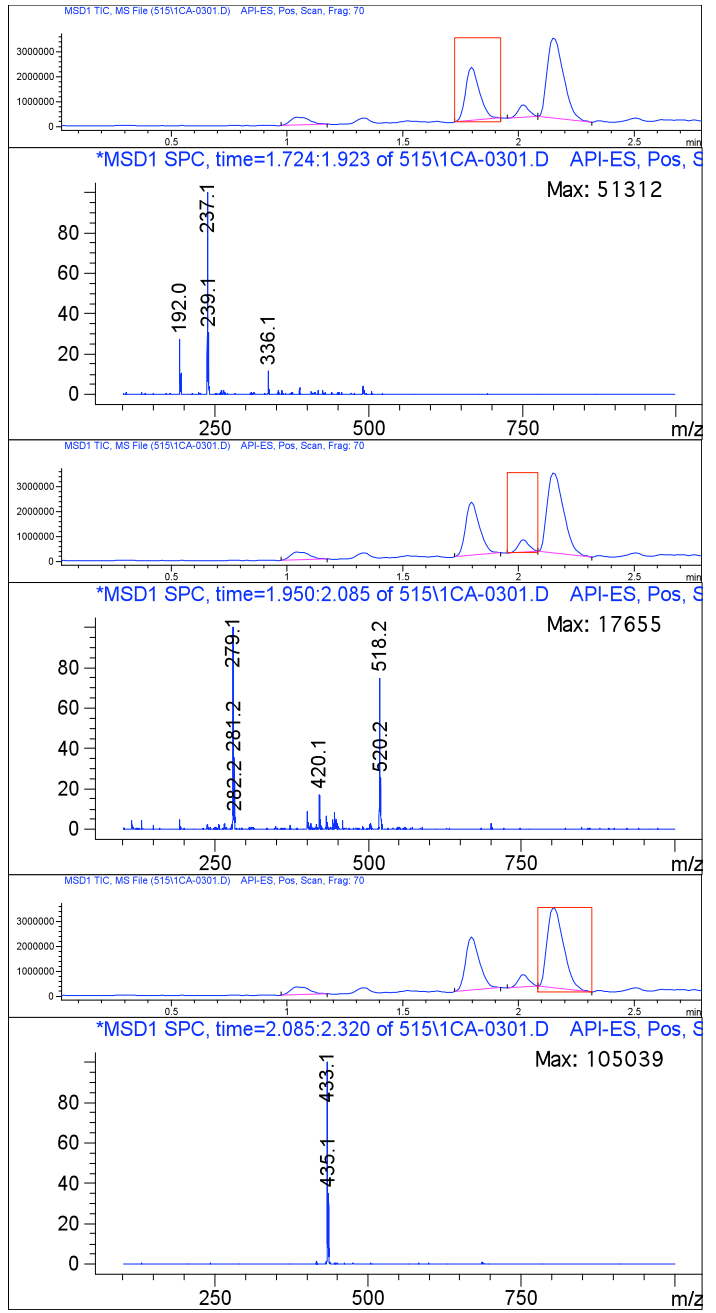
Data File d:\LCMS\Batch73\515\1CA-0301.D
 Sample Name: PH101968P1-C-01
 Instrument 1 21/11/2005 21:08:03 LCMS#1
 Column: Chromolith SpeedROD C18 50x4.6mm | 3.75ml/min
 Gradient: "A"->@2.2min->"B"(Hold 0.5min)->@0.1min->"A"->PostRun
 PMP1, Solvent A : 0.1% TFA in AcN/Water (5:95)
 PMP1, Solvent B : 0.1% TFA in AcN
 PMP1, Solvent C : 10mM CH3COONH4 in AcN/Water (2.5:75.5)
 PMP1, Solvent D : 10mM CH3COONH4 in AcN/Water (90:10)
 Ionization mode : API-ES Positive

Signal 1: ADC1 A, ELSD

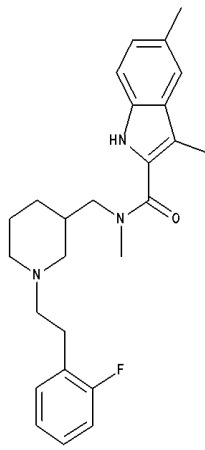
Peak #	RetTime [min]	Type	Width [min]	Area [mV*s]	Height [mV]	Area %
1	1.784	BP	0.0458	18.61182	6.23471	2.5271
2	2.138	VB	0.0442	710.46625	249.60782	96.4663
3	2.484	PB	0.0408	7.41366	2.81217	1.0066
Totals :				736.49173	258.65469	

Signal 2: MSD1 TIC, MS File

Peak #	RetTime [min]	Type	Width [min]	Area	Height	Area %
1	1.044	PBA	0.0751	1.76742e6	3.20742e5	6.2756
2	1.797	PBA	0.0619	8.89047e6	2.14352e6	31.5672
3	2.019	PB	0.0487	1.63362e6	5.03674e5	5.8005
4	2.151	VBA	0.0762	1.58721e7	3.23493e6	56.3568
Totals :				2.81636e7	6.20287e6	



PH10164705



ID	25084538	421.5628	C ₂₆ H ₃₂ FN ₃ O

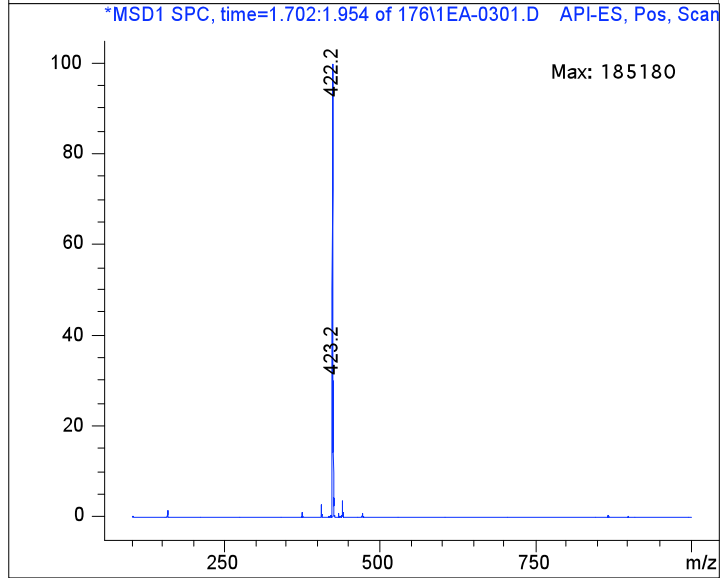
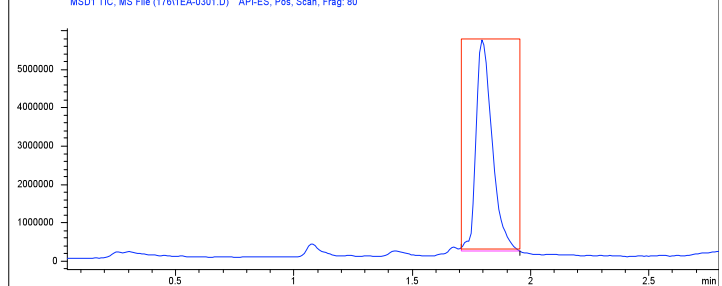
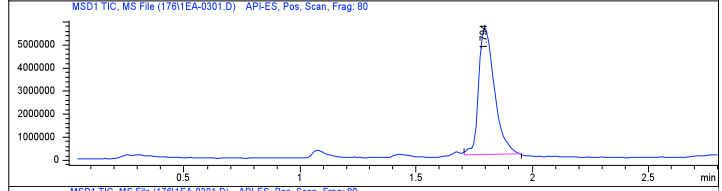
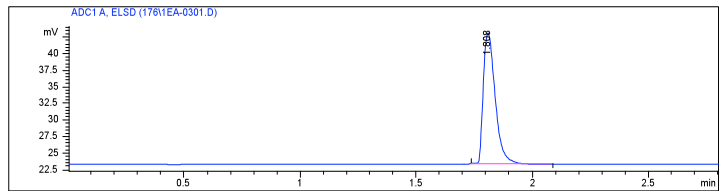
Data File d:\Batch55\176\1EA-0301.D Sample Name: PH101647P1-E-01
 Instrument 1 31/05/2005 21:45:22
 Column: Chromolith SpeedROD C18 50x4.6mm | 3.75ml/min
 Gradient: "A"->@2.4min->"B"(Hold 0.3min)->@0.1min->"A"->PostRun
 PMP1, Solvent A : 0.1% TFA in AcN/Water (5:95)
 PMP1, Solvent B : 0.1% TFA in AcN
 PMP1, Solvent C : 10mM CH3COONH4 in AcN/Water (2.5:75.5)
 PMP1, Solvent D : 10mM CH3COONH4 in AcN/Water (90:10)
 Ionization mode : API-ES Positive

Signal 1: ADC1 A, ELSD

Peak #	RetTime [min]	Type	Width [min]	Area [mV*s]	Height [mV]	Area %
1	1.808	BP	0.0568	71.07999	19.83622	100.0000
Totals :				71.07999	19.83622	

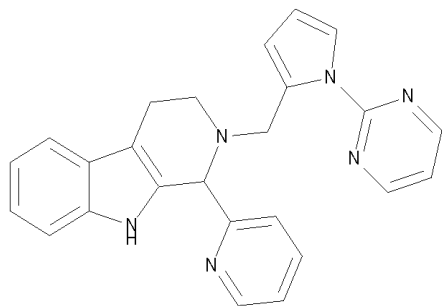
Signal 2: MSD1 TIC, MS File

Peak #	RetTime [min]	Type	Width [min]	Area	Height	Area %
1	1.794	BBA	0.0719	2.64377e7	5.53835e6	100.0000
Totals :				2.64377e7	5.53835e6	



3 1.952 PP 0.0392 1.22771 4.90282e-1 0.0516
 Totals : 2380.70346 545.06362

PH10005825



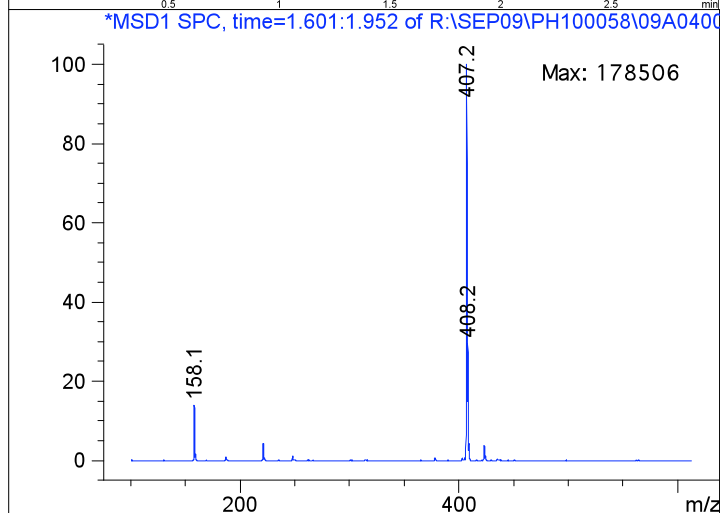
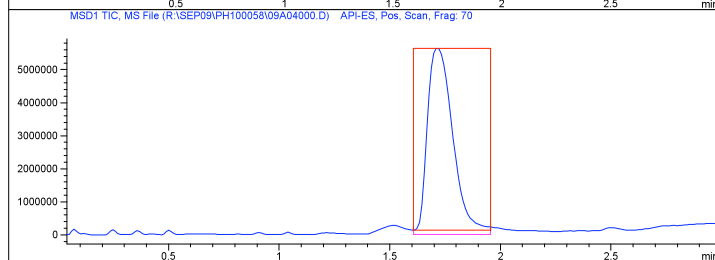
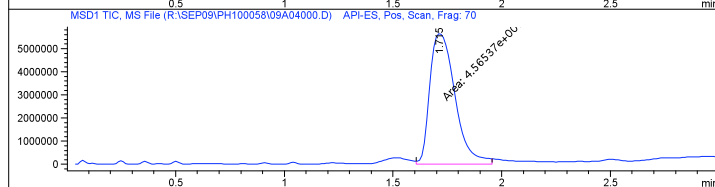
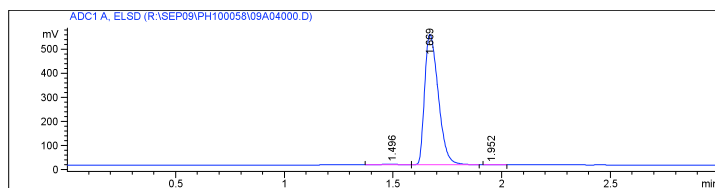
Signal 2: MSD1 TIC, MS File

Peak #	RetTime [min]	Type	Width [min]	Area	Height	Area %
1	1.715	MF	0.1344	4.56537e7	5.66035e6	100.0000
Totals :				4.56537e7	5.66035e6	

ID 26349610 406.4943 C₂₅H₂₂N₆



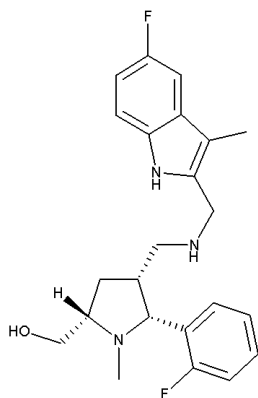
Data File R:\SEP09\PH100058\09A04000.D Sample Name: PH100058A04
 Instrument 1 12/09/2003 12:40:22 Alexey Lapin
 Column: Chromolith SpeedROD 50x4.6mm | Flow Rate: 3.0ml/min
 Gradient: "A"->@2.0min->"B"(Hold 1.0min)->@0.5min->"A"->PostRun
 PMP1, Solvent A : 0.1% TFA in AcN/Water (5:95)
 PMP1, Solvent B : 0.1% TFA in AcN
 PMP1, Solvent C : 10mM CH3COONH4 in AcN/Water (2.5:97.5)
 PMP1, Solvent D : 10mM CH3COONH4 in AcN/Water (90:10)
 Ionization mode : API-ES Positive



Signal 1: ADC1 A, ELSD

Peak #	RetTime [min]	Type	Width [min]	Area [mV*s]	Height [mV]	Area %
1	1.496	VB	0.0701	10.21574	3.09580	0.16811
2	1.669	VB	0.0699	2363.26001	541.47754	99.2673

PH10201430



ID	26734150	399.4879	C ₂₃ H ₂₇ F ₂ N ₃ O

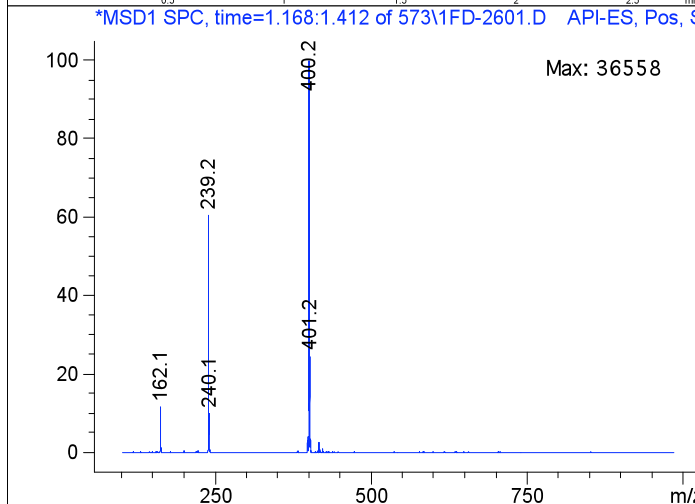
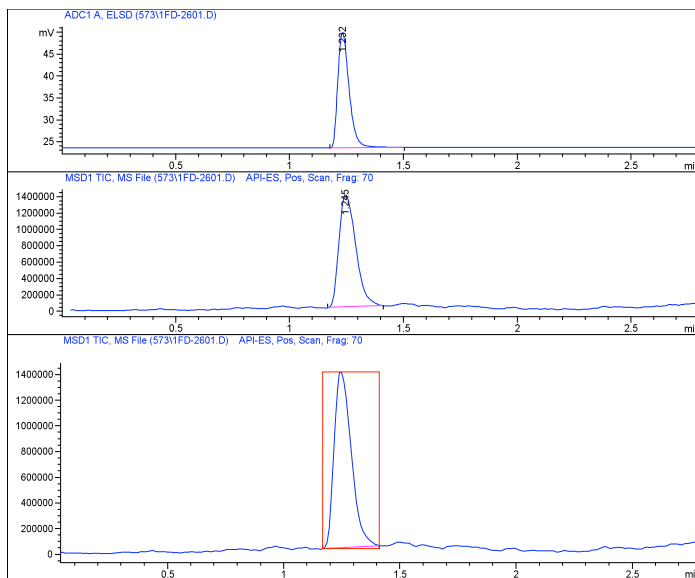
Data File d:\LCMS\Batch73\573\1FD-2601.D
 Sample Name: PH102014P1-F-04
 Instrument 1 11/12/2005 03:41:20 LCMS#1
 Column: Chromolith SpeedROD C18 50x4.6mm | 3.75ml/min
 Gradient: "A"->@2.2min->"B"(Hold 0.5min)->@0.1min->"A"->PostRun
 PMP1, Solvent A : 0.1% TFA in AcN/Water (5:95)
 PMP1, Solvent B : 0.1% TFA in AcN
 PMP1, Solvent C : 10mM CH3COONH4 in AcN/Water (2.5:75.5)
 PMP1, Solvent D : 10mM CH3COONH4 in AcN/Water (90:10)
 Ionization mode : API-ES Positive

Signal 1: ADC1 A, ELSD

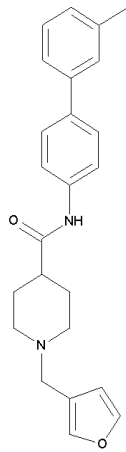
Peak #	RetTime [min]	Type	Width [min]	Area [mV*s]	Height [mV]	Area %
1	1.232	PB	0.0545	91.36007	26.30350	100.0000
Totals :				91.36007	26.30350	

Signal 2: MSD1 TIC, MS File

Peak #	RetTime [min]	Type	Width [min]	Area	Height	Area %
1	1.245	PBA	0.0811	6.99777e6	1.37377e6	100.0000
Totals :				6.99777e6	1.37377e6	



PH10126118



ID 30394348 374.4870 C₂₄H₂₆N₂O₂



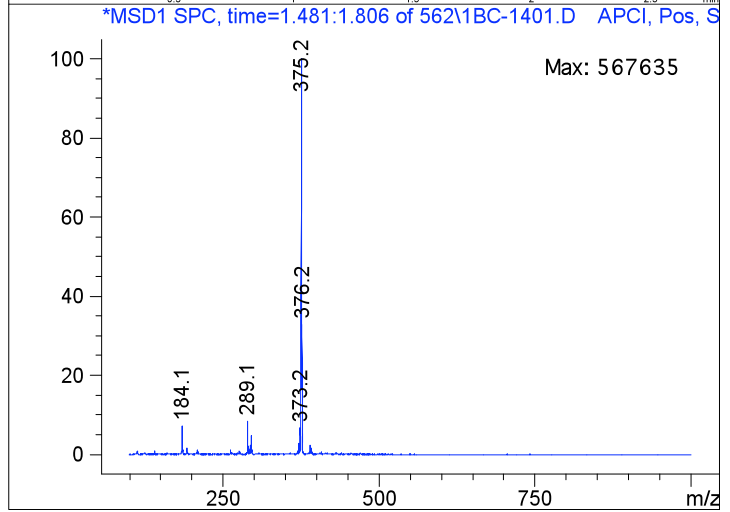
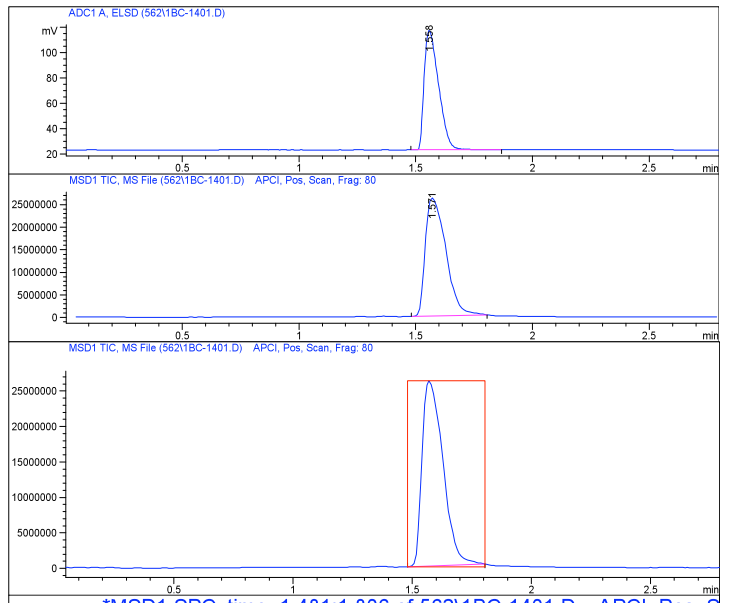
Data File d:\LCMS\Batch73\562\1BC-1401.D Sample Name: PH101261P1-B-03
 Instrument 1 21/01/2005 01:29:06 LCMS#1
 Column: Chromolith SpeedROD C18 50x4.6mm | 3.75ml/min
 Gradient: "A"->@2.4min->"B" (Hold 0.3min)->@0.1min->"A"->PostRun
 PMP1, Solvent A : 0.1% TFA in AcN/Water (5:95)
 PMP1, Solvent B : 0.1% TFA in AcN
 PMP1, Solvent C : 10mM CH3COONH4 in AcN/Water (2.5:75.5)
 PMP1, Solvent D : 10mM CH3COONH4 in AcN/Water (90:10)
 Ionization mode : APCI Positive

Signal 1: ADC1 A, ELSD

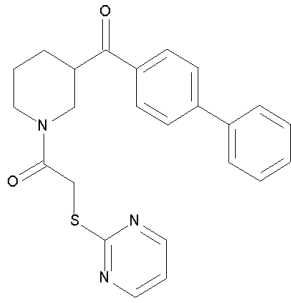
Peak #	RetTime [min]	Type	Width [min]	Area [mV*s]	Height [mV]	Area %
1	1.558	BP	0.0660	403.60242	94.13341	100.0000
Totals :				403.60242	94.13341	

Signal 2: MSD1 TIC, MS File

Peak #	RetTime [min]	Type	Width [min]	Area	Height	Area %
1	1.571	PBA	0.1008	1.59148e8	2.61366e7	100.0000
Totals :				1.59148e8	2.61366e7	



PH10053902



ID 30696672 417.5338 C₂₄H₂₃N₃O₂S



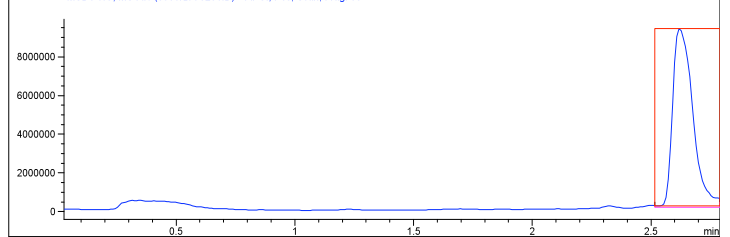
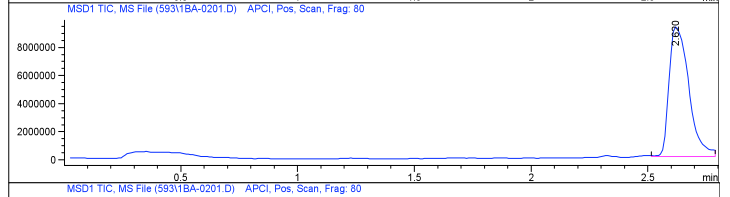
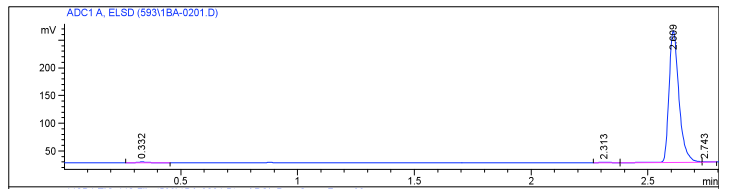
Data File D:\LCMS4\593\1BA-0201.D Sample Name: PH100539P1-B-01
 Instrument 1 13/02/05 16:39:06 LCMS#4
 Column: Chromolith SpeedROD C18 50x4.6mm | 3.75ml/min
 Gradient: "A"->@2.4min->"B"(Hold 0.3min)->@0.1min->"A"->PostRun
 PMP1, Solvent A : 0.1% TFA in AcN/Water (5:95)
 PMP1, Solvent B : 0.1% TFA in AcN
 PMP1, Solvent C : 10mM CH3COONH4 in AcN/Water (2.5:75.5)
 PMP1, Solvent D : 10mM CH3COONH4 in AcN/Water (90:10)
 Ionization mode : APCI Positive

Signal 1: ADC1 A, ELSD

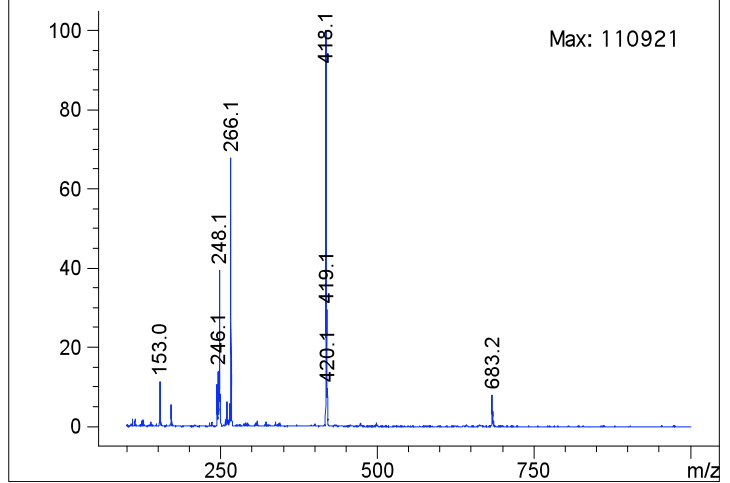
Peak #	RetTime [min]	Type	Width [min]	Area [mV*s]	Height [mV]	Area %
1	0.332	BP	0.0477	4.07686	1.26314	0.5796
2	2.313	PP	0.0394	1.20912	4.80233e-1	0.1719
3	2.609	VV	0.0441	696.23389	238.49384	98.9824
4	2.743	VBA	0.0329	1.87160	8.76479e-1	0.2661
Totals :				703.39146	241.11369	

Signal 2: MSD1 TIC, MS File

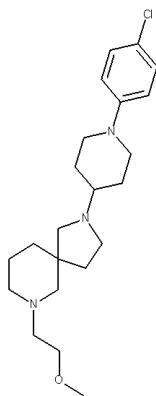
Peak #	RetTime [min]	Type	Width [min]	Area	Height	Area %
1	2.620	BBA	0.0958	5.45139e7	9.25767e6	100.0000
Totals :				5.45139e7	9.25767e6	



*MSD1 SPC, time=2.519:2.789 of 593\1BA-0201.D APCI, Pos, Sca



PH10214617



ID	32704462	391.9888	C ₂₂ H ₃₄ ClN ₃ O

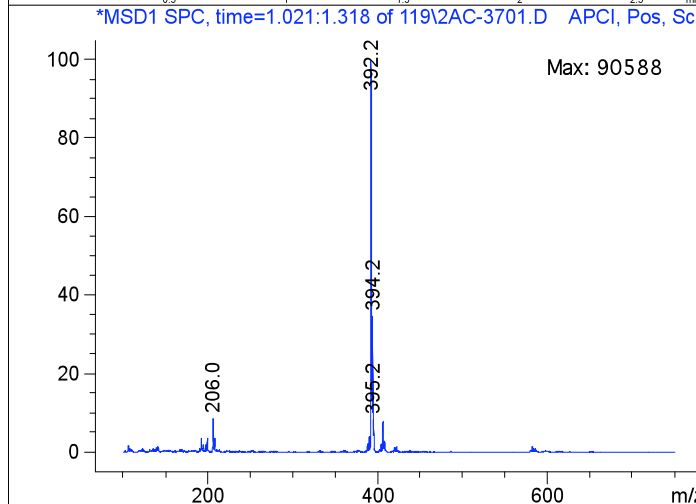
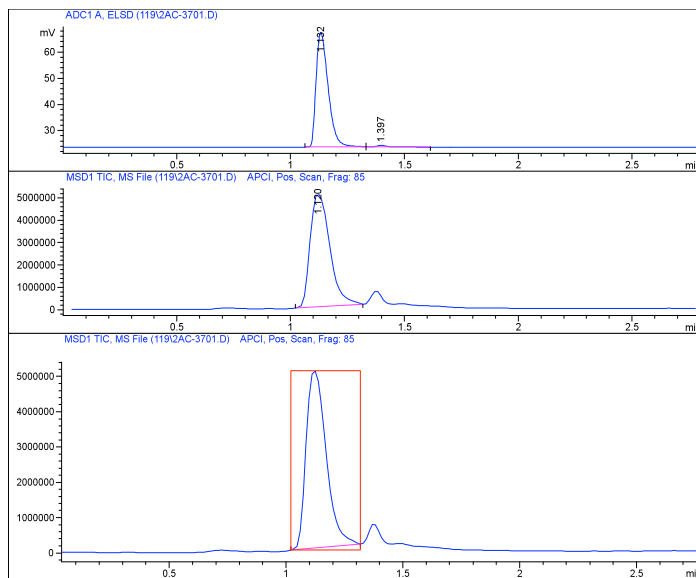
Data File C:\HPCHEM\1\DATA\119\2AC-3701.D
 Sample Name: PH102146P2-A-03
 Instrument 1 18/04/2006 03:51:50 LCMS#1
 Column: Chromolith SpeedROD C18 50x4.6mm | 3.75ml/min
 Gradient: "A"->@2.2min->"B"(Hold 0.5min)->@0.1min->"A"->PostRun
 PMP1, Solvent A : 0.1% TFA in AcN/Water (5:95)
 PMP1, Solvent B : 0.1% TFA in AcN
 PMP1, Solvent C : 10mM CH3COONH4 in AcN/Water (2.5:75.5)
 PMP1, Solvent D : 10mM CH3COONH4 in AcN/Water (90:10)
 Ionization mode : APCI Positive

Signal 1: ADC1 A, ELSD

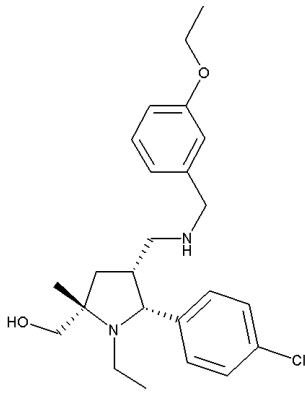
Peak #	RetTime [min]	Type	Width [min]	Area [mV*s]	Height [mV]	Area %
1	1.132	BV	0.0571	162.27660	43.92739	98.1565
2	1.397	VB	0.0598	3.04778	7.27992e-1	1.8435
Totals :				165.32437	44.65539	

Signal 2: MSD1 TIC, MS File

Peak #	RetTime [min]	Type	Width [min]	Area	Height	Area %
1	1.120	PBA	0.0967	2.99745e7	5.02777e6	100.0000
Totals :				2.99745e7	5.02777e6	



PH10200541



ID	39902220	416.9958	C ₂₄ H ₃₃ ClN ₂ O ₂
----	----------	----------	---

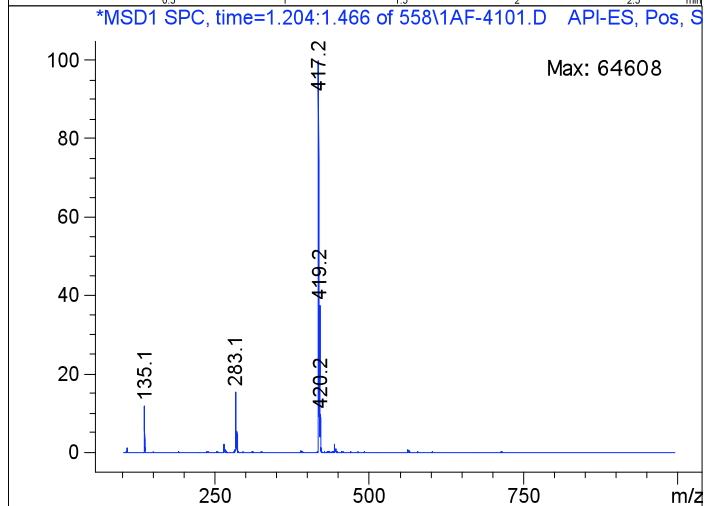
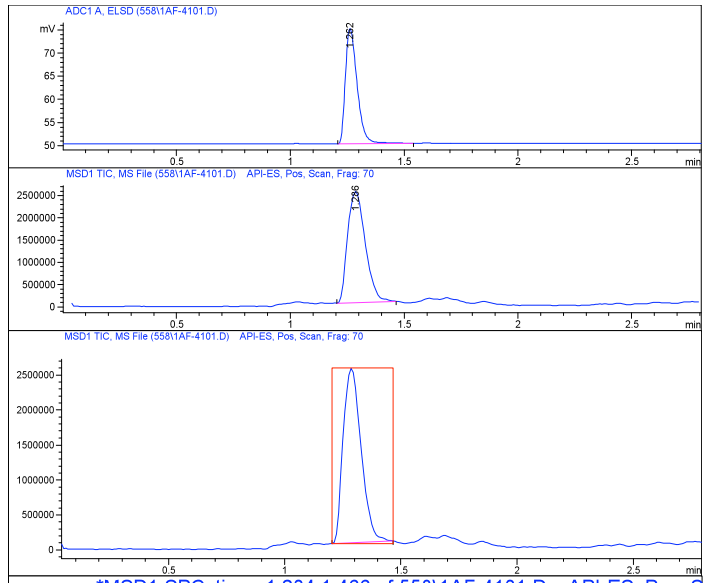
Data File d:\LCMS\Batch73\558\1AF-4101.D
 Sample Name: PH102005P1-A-06
 Instrument 1 05/12/2005 05:45:08 LCMS#1
 Column: Chromolith SpeedROD C18 50x4.6mm | 3.75ml/min
 Gradient: "A"->@2.2min->"B"(Hold 0.5min)->@0.1min->"A"->PostRun
 PMP1, Solvent A : 0.1% TFA in AcN/Water (5:95)
 PMP1, Solvent B : 0.1% TFA in AcN
 PMP1, Solvent C : 10mM CH3COONH4 in AcN/Water (2.5:75.5)
 PMP1, Solvent D : 10mM CH3COONH4 in AcN/Water (90:10)
 Ionization mode : API-ES Positive

Signal 1: ADC1 A, ELSD

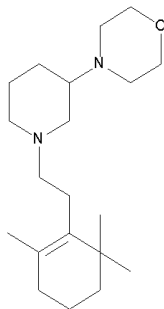
Peak #	RetTime [min]	Type	Width [min]	Area [mV*s]	Height [mV]	Area %
1	1.262	PB	0.0560	89.64188	24.89600	100.0000
Totals :				89.64188	24.89600	

Signal 2: MSD1 TIC, MS File

Peak #	RetTime [min]	Type	Width [min]	Area	Height	Area %
1	1.286	PBA	0.0871	1.34414e7	2.50142e6	100.0000
Totals :				1.34414e7	2.50142e6	



PH10125809



ID 51665828 320.5227 C₂₀H₃₆N₂O



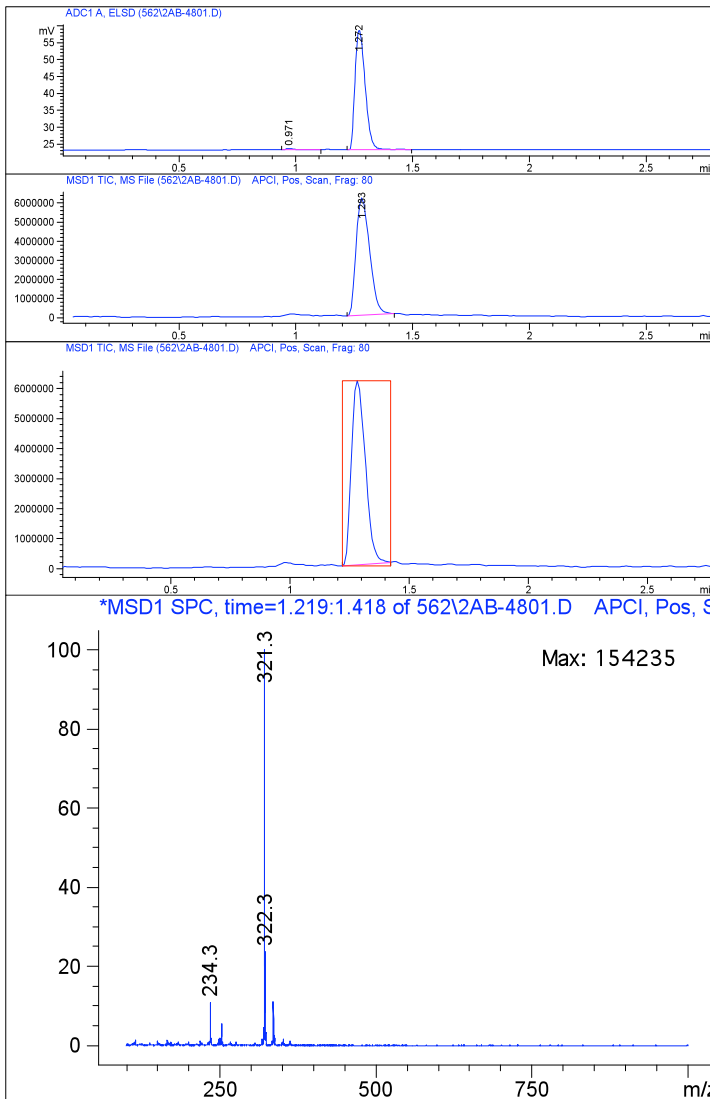
Data File d:\LCMS\Batch73\562\2AB-4801.D Sample Name: PH101258P2-A-02
 Instrument 1 21/01/2005 04:23:32 LCMS#1
 Column: Chromolith SpeedROD C18 50x4.6mm | 3.75ml/min
 Gradient: "A"->@2.4min->"B" (Hold 0.3min)->@0.1min->"A"->PostRun
 PMP1, Solvent A : 0.1% TFA in AcN/Water (5:95)
 PMP1, Solvent B : 0.1% TFA in AcN
 PMP1, Solvent C : 10mM CH3COONH4 in AcN/Water (2.5:75.5)
 PMP1, Solvent D : 10mM CH3COONH4 in AcN/Water (90:10)
 Ionization mode : APCI Positive

Signal 1: ADC1 A, ELSD

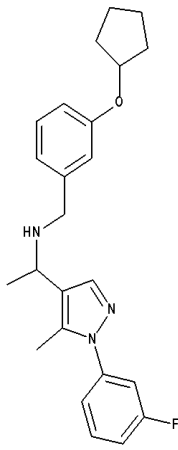
Peak #	RetTime [min]	Type	Width [min]	Area [mV*s]	Height [mV]	Area %
1	0.971	BP	0.0408	1.09846	3.90429e-1	1.0181
2	1.272	PP	0.0483	106.79299	35.34140	98.9819
Totals :				107.89145	35.73183	

Signal 2: MSD1 TIC, MS File

Peak #	RetTime [min]	Type	Width [min]	Area	Height	Area %
1	1.283	PBA	0.0687	2.47368e7	6.13146e6	100.0000
Totals :				2.47368e7	6.13146e6	



PH10173537



ID 58227375 393.5087 C₂₄H₂₈FN₃O



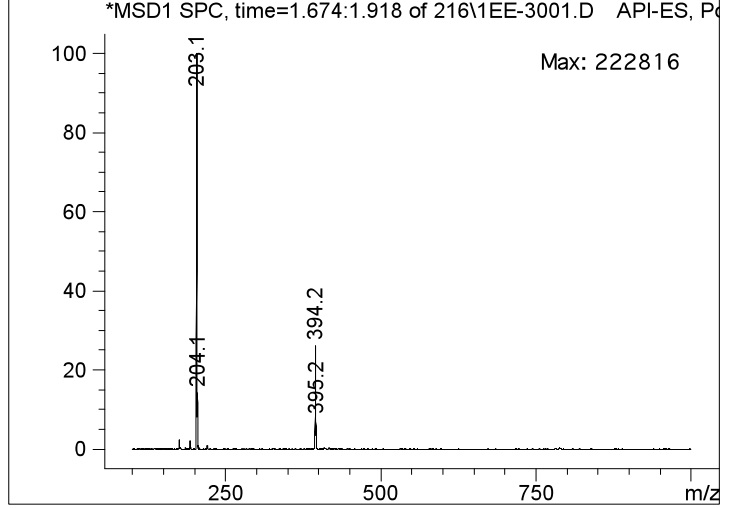
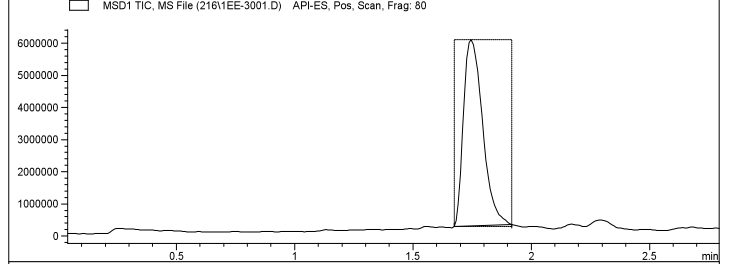
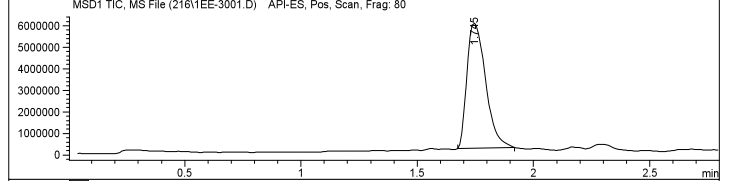
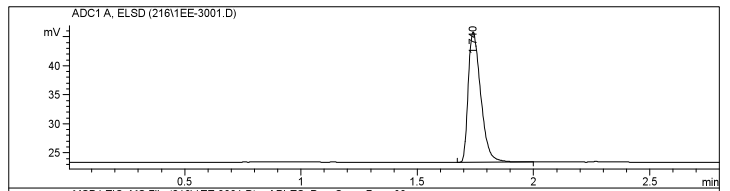
Data File d:\Batch55\216\1EE-3001.D Sample Name: PH101735P1-E-05
 Instrument 1 11/06/2005 13:23:38 LCMS#2
 Column: Chromolith SpeedROD C18 50x4.6mm | 3.75ml/min
 Gradient: "A"->@2.4min->"B"(Hold 0.3min)->@0.1min->"A"->PostRun
 PMP1, Solvent A : 0.1% TFA in AcN/Water (5:95)
 PMP1, Solvent B : 0.1% TFA in AcN
 PMP1, Solvent C : 10mM CH3COONH4 in AcN/Water (2.5:75.5)
 PMP1, Solvent D : 10mM CH3COONH4 in AcN/Water (90:10)
 Ionization mode : API-ES Positive

Signal 1: ADC1 A, ELSD

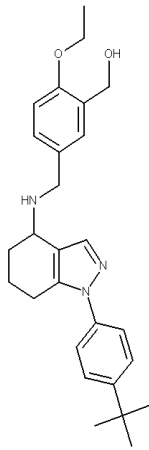
Peak #	RetTime [min]	Type	Width [min]	Area [mV*s]	Height [mV]	Area %
1	1.740	PB	0.0575	83.63236	22.43215	100.0000
Totals :				83.63236	22.43215	

Signal 2: MSD1 TIC, MS File

Peak #	RetTime [min]	Type	Width [min]	Area	Height	Area %
1	1.745	BBA	0.0870	3.24875e7	5.80224e6	100.0000
Totals :				3.24875e7	5.80224e6	



PH10167537



ID 64805911 433.5989 C₂₇H₃₅N₃O₂



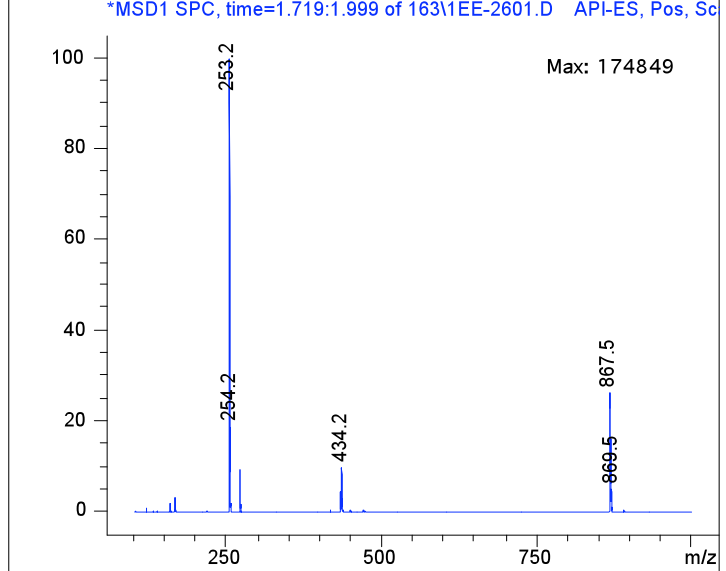
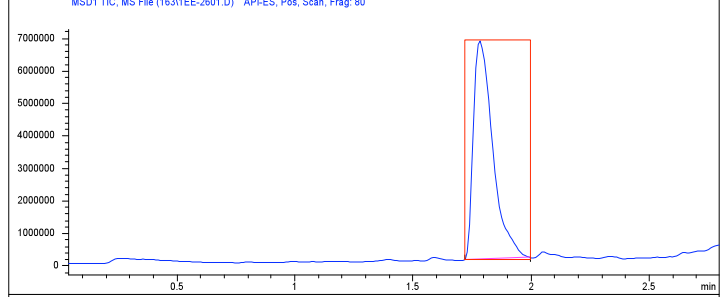
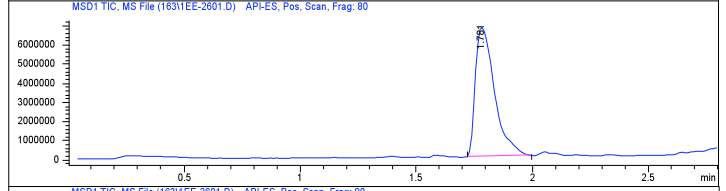
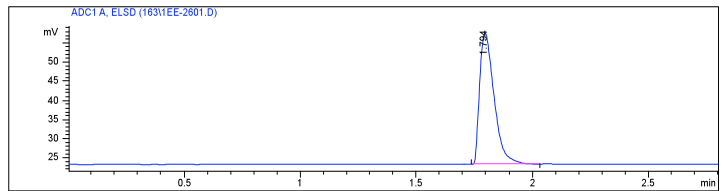
Data File d:\Batch55\163\1EE-2601.D Sample Name: PH101675P1-E-05
 Instrument 1 29/05/2005 23:34:30
 Column: Chromolith SpeedROD C18 50x4.6mm | 3.75ml/min
 Gradient: "A"->@2.4min->"B"(Hold 0.3min)->@0.1min->"A"->PostRun
 PMP1, Solvent A : 0.1% TFA in AcN/Water (5:95)
 PMP1, Solvent B : 0.1% TFA in AcN
 PMP1, Solvent C : 10mM CH3COONH4 in AcN/Water (2.5:75.5)
 PMP1, Solvent D : 10mM CH3COONH4 in AcN/Water (90:10)
 Ionization mode : API-ES Positive

Signal 1: ADC1 A, ELSD

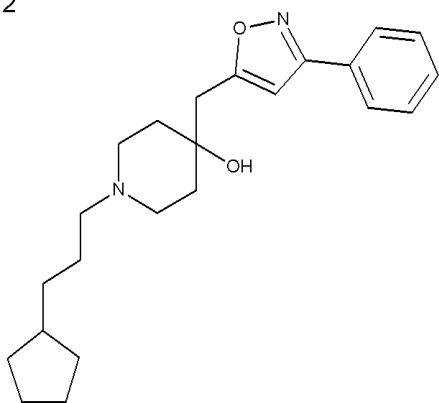
Peak #	RetTime [min]	Type	Width [min]	Area [mV*s]	Height [mV]	Area %
1	1.794	PB	0.0676	148.99425	34.37152	100.0000
Totals :				148.99425	34.37152	

Signal 2: MSD1 TIC, MS File

Peak #	RetTime [min]	Type	Width [min]	Area	Height	Area %
1	1.781	PBA	0.0887	3.86759e7	6.73159e6	100.0000
Totals :				3.86759e7	6.73159e6	



PH10190512



ID	66248419	368.5237	C ₂₃ H ₃₂ N ₂ O ₂

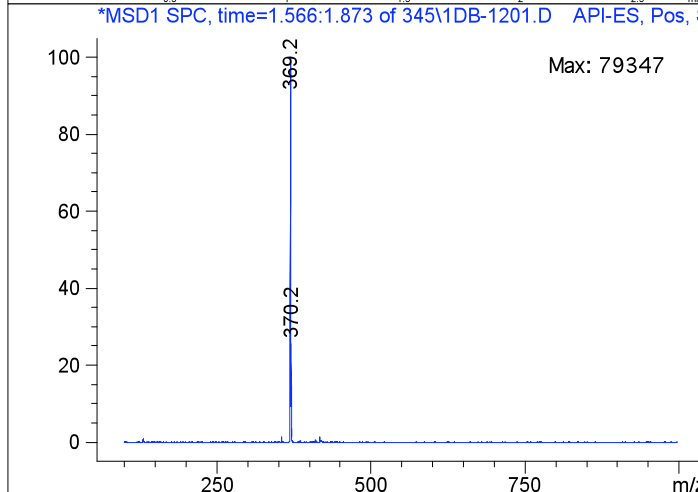
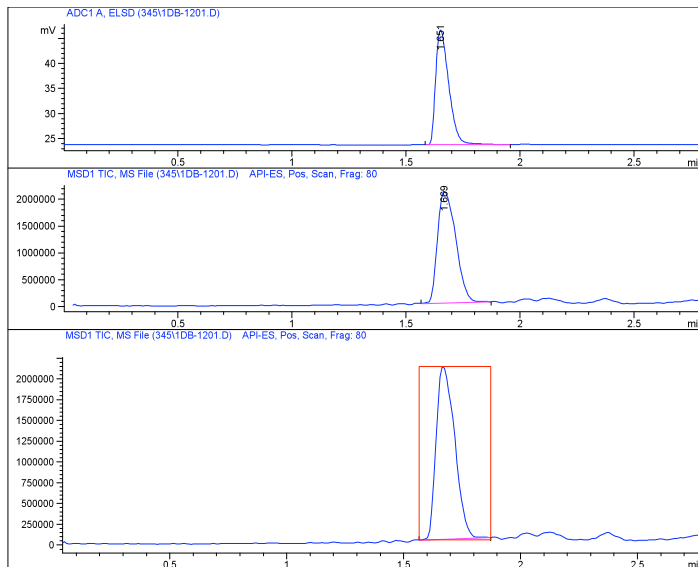
Data File d:\LCMS\Batch73\345\1DB-1201.D
 Sample Name: PH101905P1-D-02
 Instrument 1 17/09/2005 09:47:53 LCMS#1
 Column: Chromolith SpeedROD C18 50x4.6mm | 3.75ml/min
 Gradient: "A"->@2.4min->"B"(Hold 0.3min)->@0.1min->"A"->PostRun
 PMP1, Solvent A : 0.1% TFA in AcN/Water (5:95)
 PMP1, Solvent B : 0.1% TFA in AcN
 PMP1, Solvent C : 10mM CH3COONH4 in AcN/Water (2.5:75.5)
 PMP1, Solvent D : 10mM CH3COONH4 in AcN/Water (90:10)
 Ionization mode : API-ES Positive

Signal 1: ADC1 A, ELSD

Peak #	RetTime [min]	Type	Width [min]	Area [mV*s]	Height [mV]	Area %
1	1.651	PB	0.0617	91.67855	22.88134	100.0000
Totals :				91.67855	22.88134	

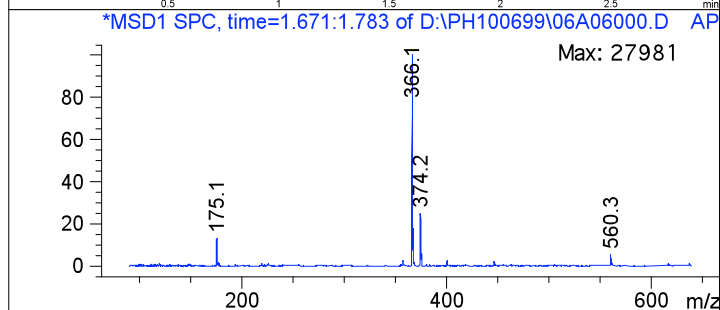
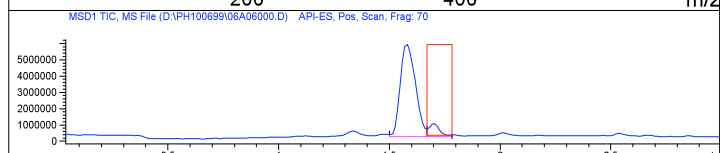
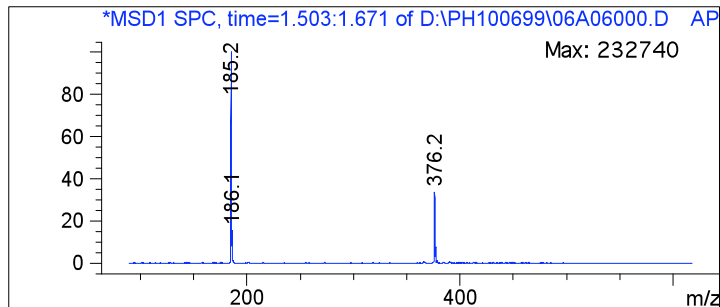
Signal 2: MSD1 TIC, MS File

Peak #	RetTime [min]	Type	Width [min]	Area	Height	Area %
1	1.669	BBA	0.0910	1.14653e7	2.09254e6	100.0000
Totals :				1.14653e7	2.09254e6	



PH10069941

ID	66310060	375.3971	C ₂₀ H ₂₀ F ₃ N ₃ O
----	----------	----------	---



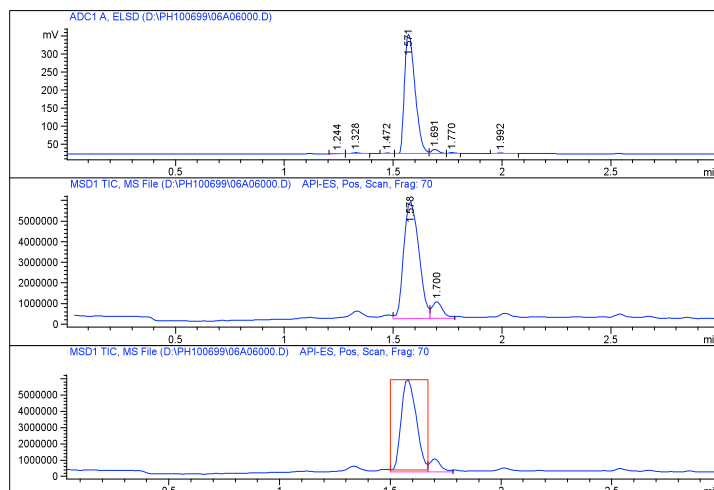
Data File D:\PH100699\06A06000.D Sample Name: PH100699A06
 Instrument 1 24/05/2004 12:38:38 Polyakova Julia
 Column: Chromolith SpeedROD 50x4.6mm | Flow Rate: 3.0ml/min
 Gradient: "A"->@2.0min->"B" (Hold 0.5min)->@0.5min->"A"->PostRun
 PMP1, Solvent A : 0.1% TFA in AcN/Water (5:95)
 PMP1, Solvent B : 0.1% TFA in AcN
 PMP1, Solvent C : 10mM CH3COONH4 in AcN/Water (2.5:97.5)
 PMP1, Solvent D : 10mM CH3COONH4 in AcN/Water (90:10)
 Ionization mode : API-ES Positive

Signal 1: ADC1 A, ELSD

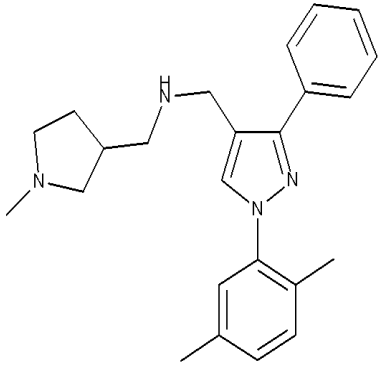
Peak #	RetTime [min]	Type	Width [min]	Area [mV*s]	Height [mV]	Area %
1	1.244	BV	0.0320	5.61700e-1	2.73097e-1	0.0482
2	1.328	VP	0.0353	6.54822	2.90875	0.5620
3	1.472	BV	0.0339	3.35714	1.50941	0.2881
4	1.571	VV	0.0534	1115.14966	330.55411	95.7005
5	1.691	VV	0.0371	28.77916	11.94617	2.4698
6	1.770	VV	0.0349	6.49628	2.81611	0.5575
7	1.992	VB	0.0442	4.35730	1.57973	0.3739
Totals				1165.24946	351.58738	

Signal 2: MSD1 TIC, MS File

Peak #	RetTime [min]	Type	Width [min]	Area	Height	Area %
1	1.578	VV	0.0793	2.72131e7	5.68364e6	90.8427
2	1.700	VB	0.0497	2.74321e6	8.06832e5	9.1573
Totals				2.99563e7	6.49047e6	



PH10077443



ID	68906088	374.5335	C ₂₄ H ₃₀ N ₄

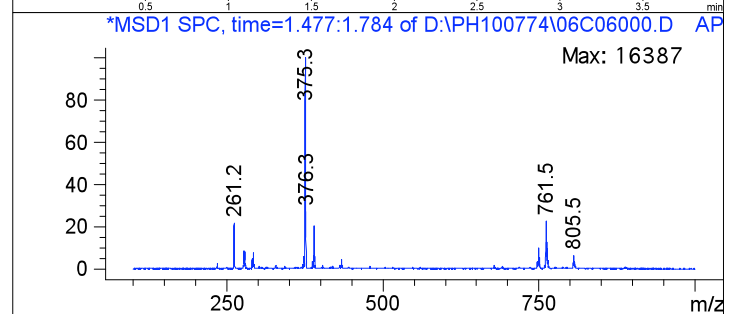
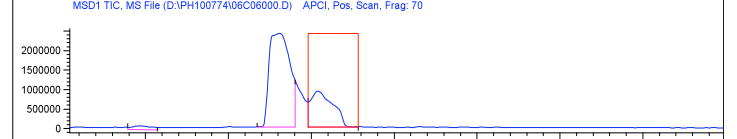
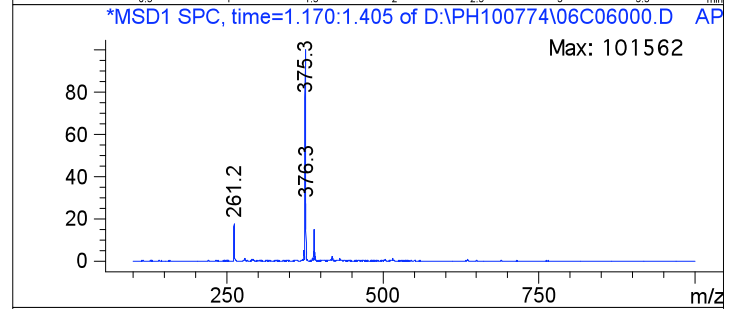
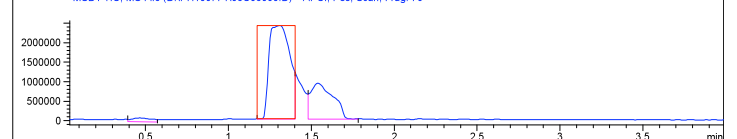
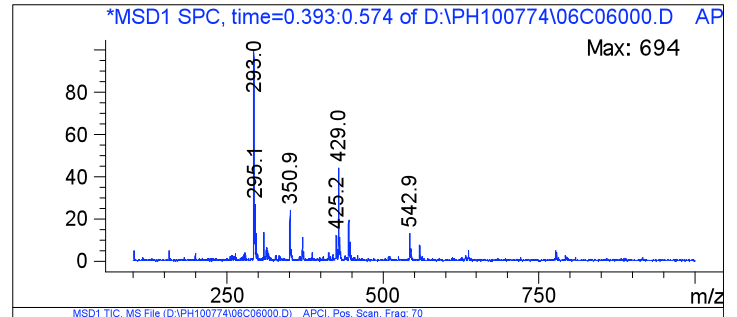
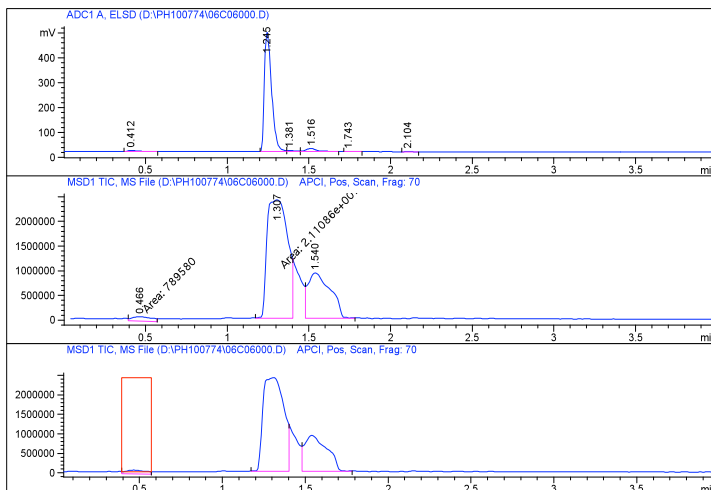
Data File D:\PH100774\06C06000.D Sample Name: PH100774C06
 Instrument 1 09/06/2004 13:19:37 Kamaev Andrei
 Column: Chromolith SpeedROD 50x4.6mm | Flow Rate: 3.0ml/min
 Gradient: "A"->@1.5min->"B" (Hold 2.0min)->@0.5min->"A"->PostRun
 PMP1, Solvent A : 0.1% TFA in AcN/Water (2.5:97.5)
 PMP1, Solvent B : 0.1% TFA in AcN
 PMP1, Solvent C : 10mM CH3COONH4 in AcN/Water (2.5:97.5)
 PMP1, Solvent D : 10mM CH3COONH4 in AcN/Water (90:10)
 Ionization mode : APCI Positive

Signal 1: ADC1 A, ELSD

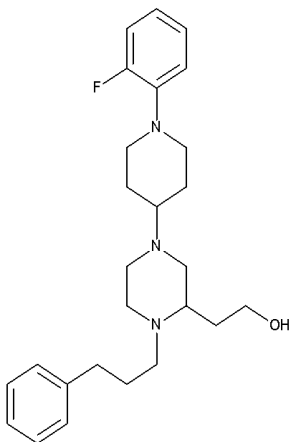
Peak #	RetTime [min]	Type	Width [min]	Area [mV*s]	Height [mV]	Area %
1	0.412	BB	0.0611	23.10199	5.27661	1.4634
2	1.245	PV	0.0481	1479.05737	478.50461	93.6902
3	1.381	VV	0.0465	14.52928	4.29583	0.9204
4	1.516	VB	0.0704	56.56740	12.36963	3.5832
5	1.743	BP	0.0353	2.77085	1.14143	0.1755
6	2.104	PP	0.0328	2.64142	1.29554	0.1673
Totals :				1578.66831	502.88364	

Signal 2: MSD1 TIC, MS File

Peak #	RetTime [min]	Type	Width [min]	Area	Height	Area %
1	0.466	MM	0.1421	7.89580e5	9.26193e4	2.5787
2	1.307	MF	0.1464	2.11086e7	2.40285e6	68.9384
3	1.540	VB	0.1294	8.72133e6	9.21626e5	28.4829
Totals :				3.06195e7	3.41710e6	



PH10093335



ID 74712138 425.5947 C₂₆H₃₆FN₃O



Data File D:\PH100933\2CE-5801.D Sample Name: PH100933P2-C-05
 Instrument 1 16/12/2004 14:33:00
 Column: Hi-Q 5um C18 50x4.6mm | 3.75ml/min | Columns Reg Valve
 Gradient: "A"->@2.4min->"B" (Hold 0.3min)->@0.1min->"A"->PostRun
 PMP1, Solvent A : 0.1% TFA in AcN/Water (5:95)
 PMP1, Solvent B : 0.1% TFA in AcN
 PMP1, Solvent C : 10mM CH3COONH4 in AcN/Water (2.5:75.5)
 PMP1, Solvent D : 10mM CH3COONH4 in AcN/Water (90:10)
 Ionization mode : APCI Positive

Signal 1: ADC1 A, ELSD

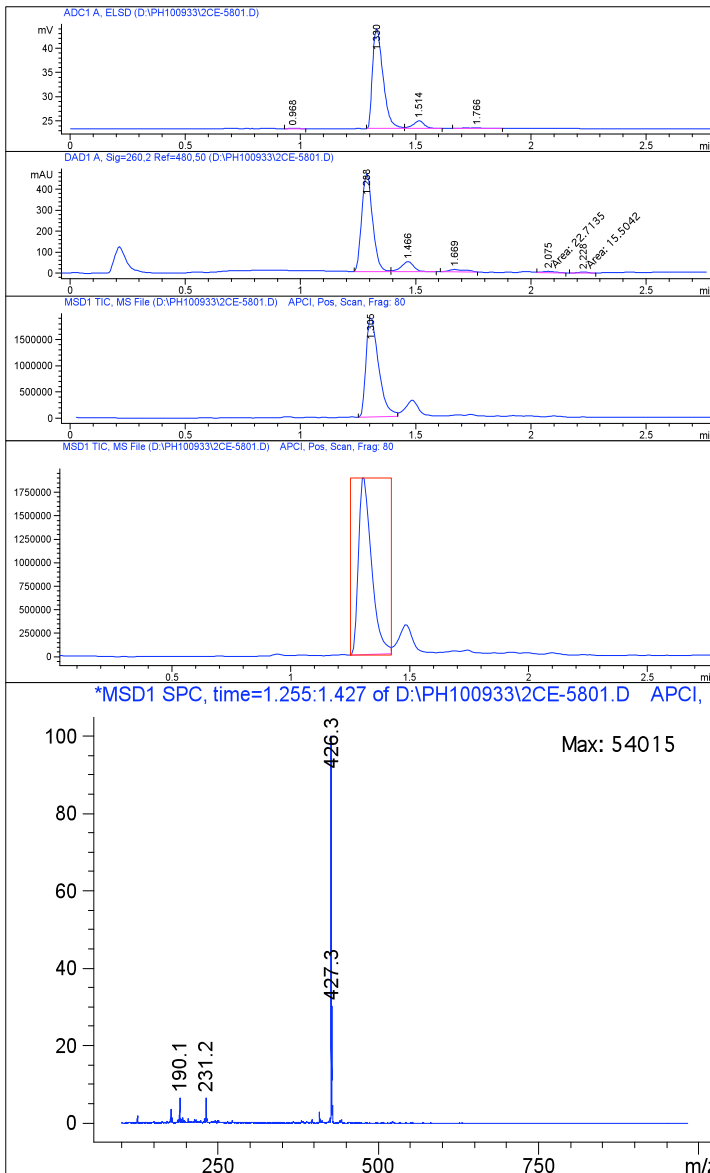
Peak #	RetTime [min]	Type	Width [min]	Area [mV*s]	Height [mV]	Area %
1	0.968	BP	0.0309	1.61832e-1	8.23843e-2	0.2276
2	1.330	BV	0.0490	65.33389	20.58625	91.8685
3	1.514	VB	0.0502	5.28867	1.57298	7.4366
4	1.766	BP	0.0505	3.32386e-1	9.13281e-2	0.4674
Totals :				71.11678	22.33294	

Signal 2: DAD1 A, Sig=260,2 Ref=480,50

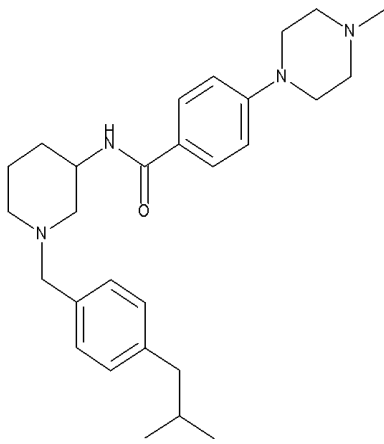
Peak #	RetTime [min]	Type	Width [min]	Area [mAU*s]	Height [mAU]	Area %
1	1.288	BV	0.0499	1523.02686	468.54712	84.7729
2	1.466	VP	0.0564	171.80168	47.32727	9.5626
3	1.669	BB	0.0766	63.55013	11.47916	3.5373
4	2.075	MM	0.0645	22.71347	5.86704	1.2642
5	2.228	MM	0.0540	15.50419	4.78275	0.8630
Totals :				1796.59632	538.00334	

Signal 3: MSD1 TIC, MS File

Peak #	RetTime [min]	Type	Width [min]	Area	Height	Area %
1	1.305	PV	0.0574	7.21459e6	1.92068e6	100.0000
Totals :				7.21459e6	1.92068e6	



PH10159113



ID 75786623 448.6572 C₂₈H₄₀N₄O



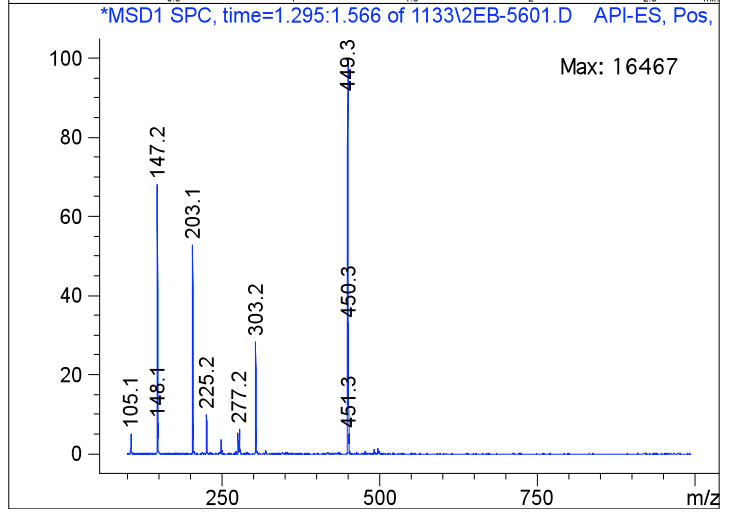
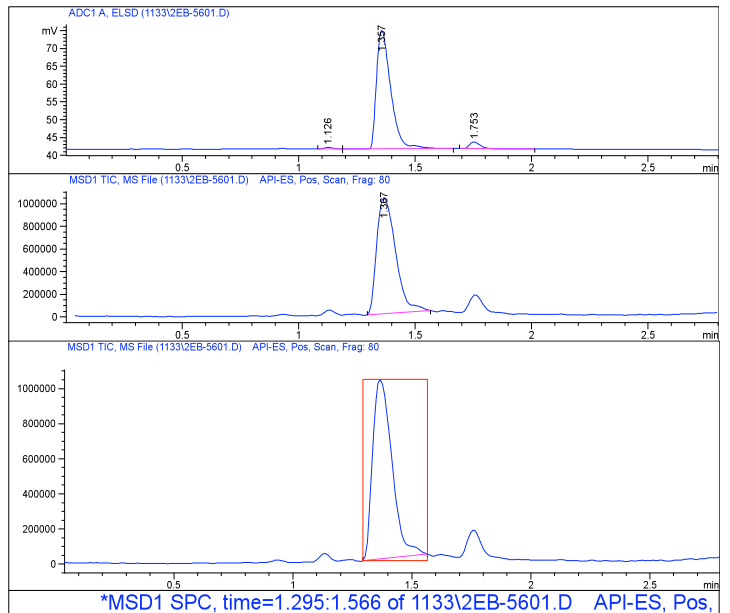
Data File d:\LCMS\Batch73\1133\2EB-5601.D Sample Name: PH101591P2-E-02
 Instrument 1 31/05/2005 08:55:42 Lcms_user
 Column: Chromolith SpeedROD C18 50x4.6mm | 3.75ml/min
 Gradient: "A"->@2.4min->"B" (Hold 0.3min)->@0.1min->"A"->PostRun
 PMP1, Solvent A : 0.1% TFA in AcN/Water (5:95)
 PMP1, Solvent B : 0.1% TFA in AcN
 PMP1, Solvent C : 10mM CH3COONH4 in AcN/Water (2.5:75.5)
 PMP1, Solvent D : 10mM CH3COONH4 in AcN/Water (90:10)
 Ionization mode : API-ES Positive

Signal 1: ADC1 A, ELSD

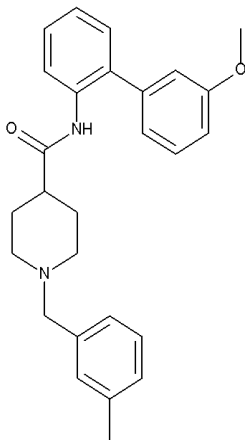
Peak #	RetTime [min]	Type	Width [min]	Area [mV*s]	Height [mV]	Area %
1	1.126	PP	0.0419	1.11901	4.21887e-1	0.7573
2	1.357	VB	0.0643	140.68600	33.27651	95.2061
3	1.753	PP	0.0498	5.96497	1.88922	4.0367
Totals :				147.76999	35.58762	

Signal 2: MSD1 TIC, MS File

Peak #	RetTime [min]	Type	Width [min]	Area	Height	Area %
1	1.367	PBA	0.0925	5.74438e6	1.02382e6	100.0000
Totals :				5.74438e6	1.02382e6	



PH10127930



ID 78917769 414.5524 C₂₇H₃₀N₂O₂



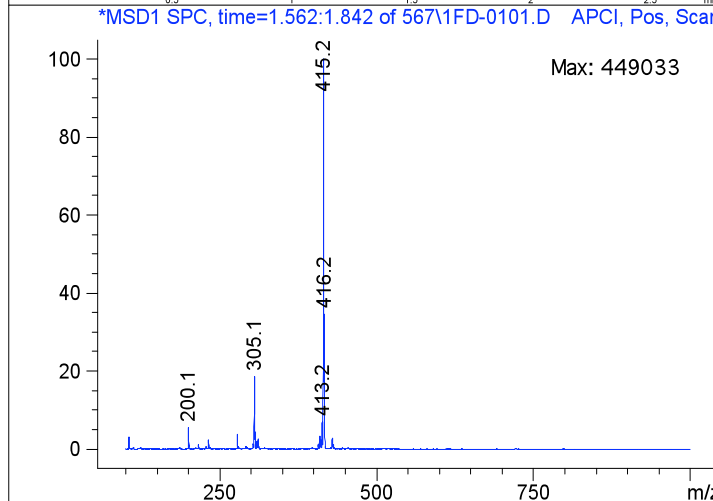
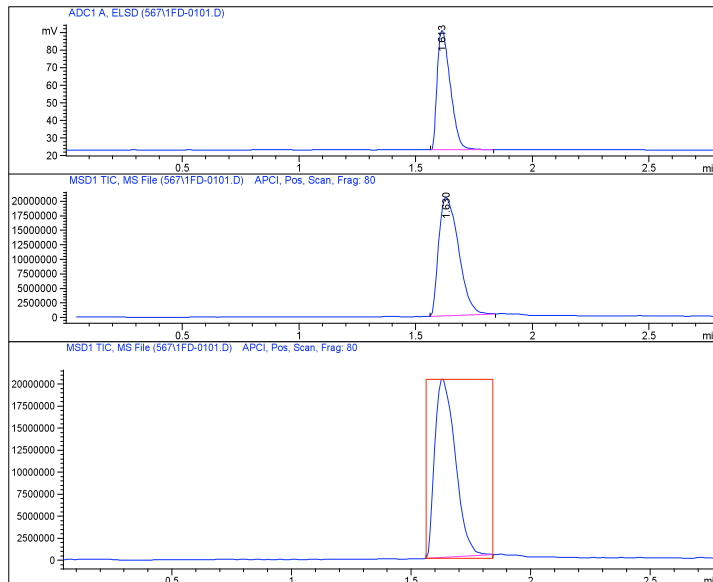
Data File d:\LCMS\Batch73\567\1FD-0101.D Sample Name: PH101279P1-F-04
 Instrument 1 22/01/2005 04:08:31 LCMS#1
 Column: Chromolith SpeedROD C18 50x4.6mm | 3.75ml/min
 Gradient: "A"->@2.4min->"B" (Hold 0.3min)->@0.1min->"A"->PostRun
 PMP1, Solvent A : 0.1% TFA in AcN/Water (5:95)
 PMP1, Solvent B : 0.1% TFA in AcN
 PMP1, Solvent C : 10mM CH3COONH4 in AcN/Water (2.5:75.5)
 PMP1, Solvent D : 10mM CH3COONH4 in AcN/Water (90:10)
 Ionization mode : APCI Positive

Signal 1: ADC1 A, ELSD

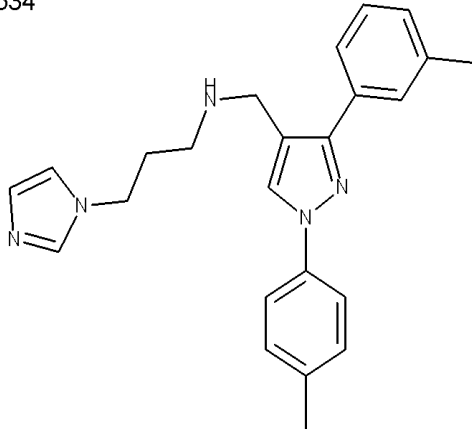
Peak #	RetTime [min]	Type	Width [min]	Area [mV*s]	Height [mV]	Area %
1	1.613	PP	0.0605	264.40524	67.81914	100.0000
Totals :				264.40524	67.81914	

Signal 2: MSD1 TIC, MS File

Peak #	RetTime [min]	Type	Width [min]	Area	Height	Area %
1	1.630	PBA	0.0961	1.20366e8	2.03567e7	100.0000
Totals :				1.20366e8	2.03567e7	



PH10050534



ID	83742393	385.5163	C ₂₄ H ₂₇ N ₅

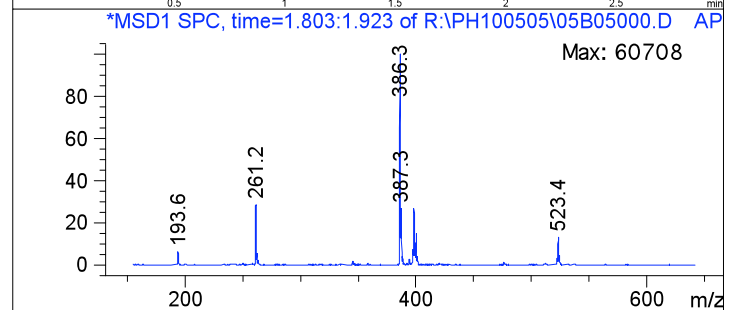
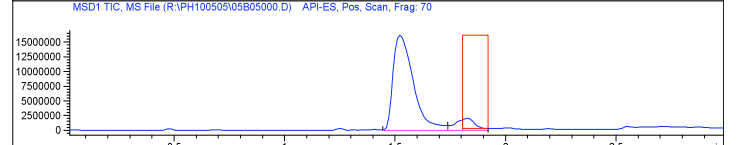
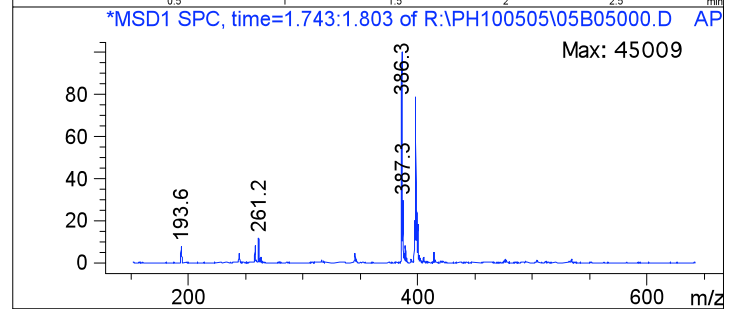
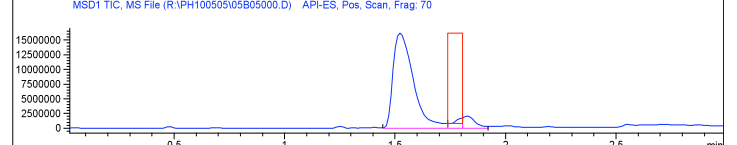
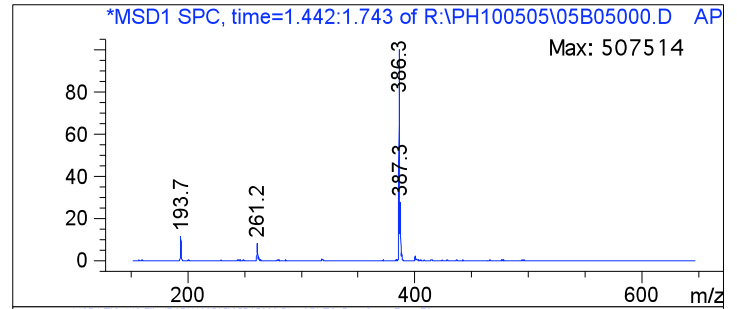
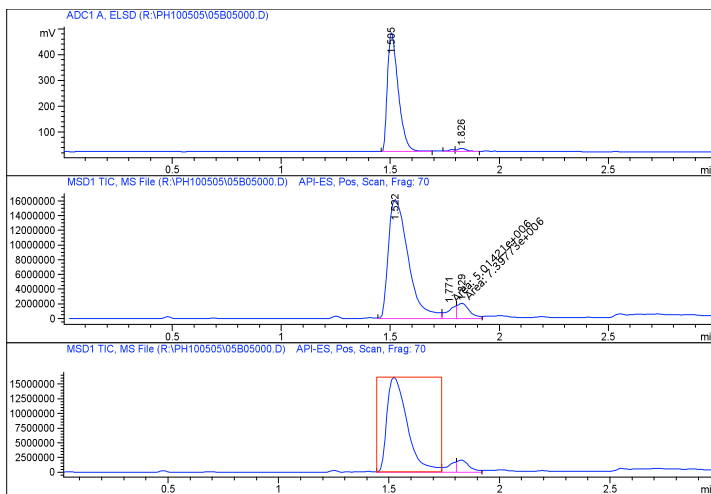
Data File R:\PH100505\05B05000.D Sample Name: PH100505B05
 Instrument 1 26/04/2004 17:52:50 Rekina Irina
 Column: Chromolith SpeedROD 50x4.6mm | Flow Rate: 3.0ml/min
 Gradient: "A"->@2.0min->"B" (Hold 0.5min)->@0.5min->"A"->PostRun
 PMP1, Solvent A : 0.1% TFA in AcN/Water (5:95)
 PMP1, Solvent B : 0.1% TFA in AcN
 PMP1, Solvent C : 10mM CH3COONH4 in AcN/Water (2.5:97.5)
 PMP1, Solvent D : 10mM CH3COONH4 in AcN/Water (90:10)
 Ionization mode : API-ES Positive

Signal 1: ADC1 A, ELSD

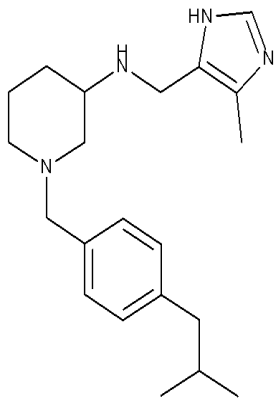
Peak #	RetTime [min]	Type	Width [min]	Area [mV*s]	Height [mV]	Area %
1	1.505	BB	0.0524	1595.42371	460.27310	97.1445
2	1.782	BV	0.0306	13.73720	6.80047	0.8365
3	1.826	VB	0.0419	33.15904	11.75383	2.0190
Totals :				1642.31994	478.82741	

Signal 2: MSD1 TIC, MS File

Peak #	RetTime [min]	Type	Width [min]	Area	Height	Area %
1	1.522	VV	0.1009	1.02378e8	1.61807e7	89.1873
2	1.771	MF	0.0486	5.01421e6	1.71897e6	4.3682
3	1.829	FM	0.0597	7.39773e6	2.06595e6	6.4446
Totals :				1.14790e8	1.99656e7	



PH10160601



ID 90837509 340.5160 C₂₁H₃₂N₄



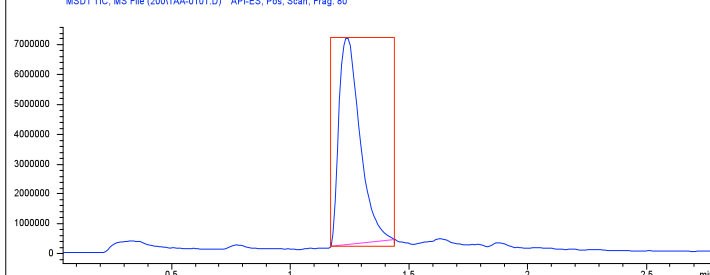
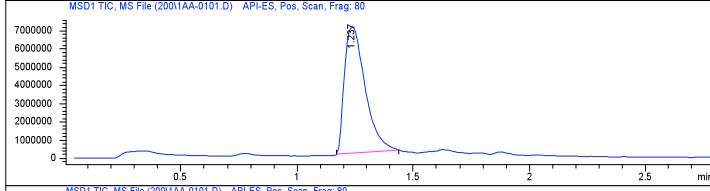
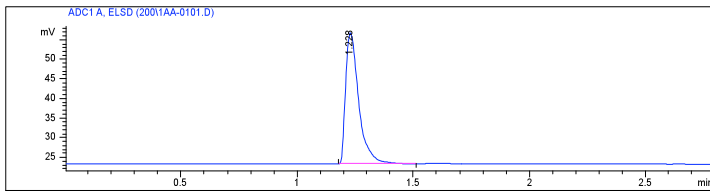
Data File d:\Batch55\200\1AA-0101.D Sample Name: PH101606P1-A-01
 Instrument 1 06/06/2005 01:29:24 LCMS#2
 Column: Chromolith SpeedROD C18 50x4.6mm | 3.75ml/min
 Gradient: "A"->@2.4min->"B"(Hold 0.3min)->@0.1min->"A"->PostRun
 PMP1, Solvent A : 0.1% TFA in AcN/Water (5:95)
 PMP1, Solvent B : 0.1% TFA in AcN
 PMP1, Solvent C : 10mM CH3COONH4 in AcN/Water (2.5:75.5)
 PMP1, Solvent D : 10mM CH3COONH4 in AcN/Water (90:10)
 Ionization mode : API-ES Positive

Signal 1: ADC1 A, ELSD

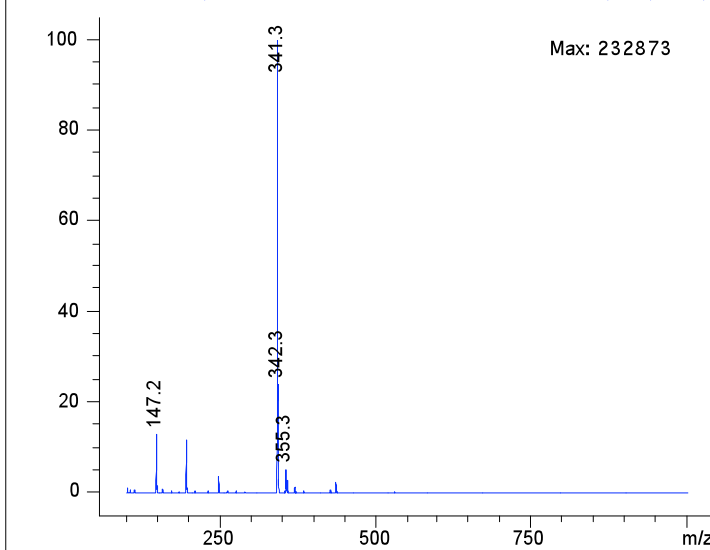
Peak #	RetTime [min]	Type	Width [min]	Area [mV*s]	Height [mV]	Area %
1	1.228	PP	0.0610	132.39023	33.54212	100.0000
Totals :				132.39023	33.54212	

Signal 2: MSD1 TIC, MS File

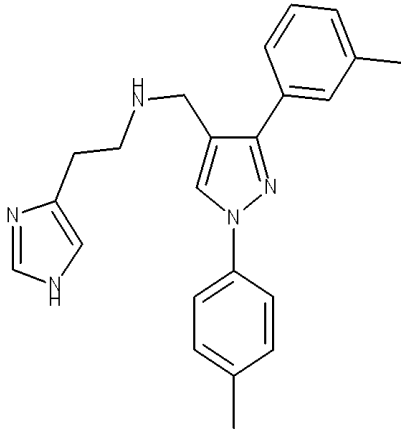
Peak #	RetTime [min]	Type	Width [min]	Area	Height	Area %
1	1.237	PBA	0.0911	4.30060e7	6.95926e6	100.0000
Totals :				4.30060e7	6.95926e6	



*MSD1 SPC, time=1.168:1.439 of 2001AA-0101.D API-ES, Pos, Scan, I



PH10050539



ID	91801070	371.4892	C ₂₃ H ₂₅ N ₅

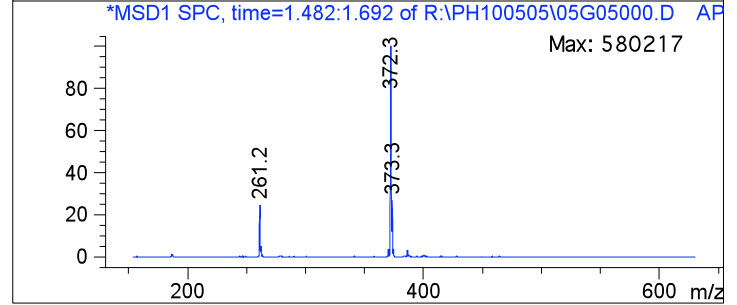
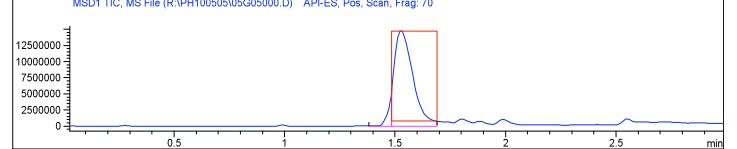
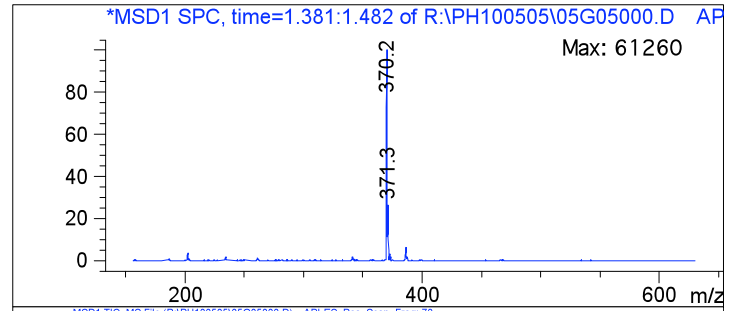
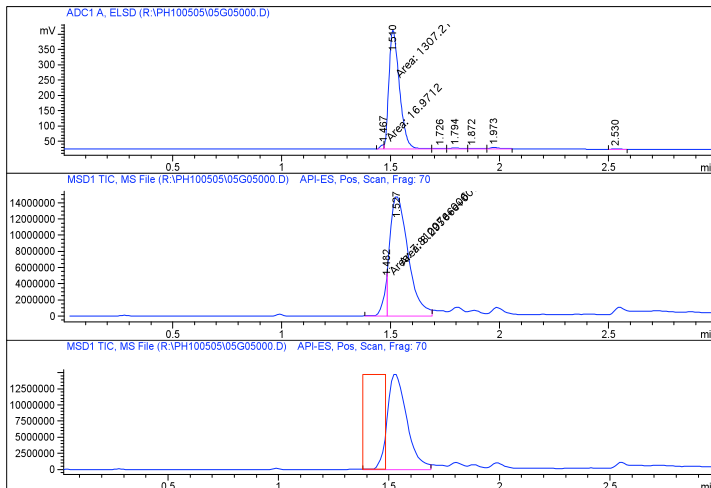
Data File R:\PH100505\05G05000.D Sample Name: PH100505G05
 Instrument 1 26/04/2004 17:54:24 Rekina Irina
 Column: Chromolith SpeedROD 50x4.6mm | Flow Rate: 3.0ml/min
 Gradient: "A"->@2.0min->"B" (Hold 0.5min)->@0.5min->"A"->PostRun
 PMP1, Solvent A : 0.1% TFA in AcN/Water (5:95)
 PMP1, Solvent B : 0.1% TFA in AcN
 PMP1, Solvent C : 10mM CH3COONH4 in AcN/Water (2.5:97.5)
 PMP1, Solvent D : 10mM CH3COONH4 in AcN/Water (90:10)
 Ionization mode : API-ES Positive

Signal 1: ADC1 A, ELSD

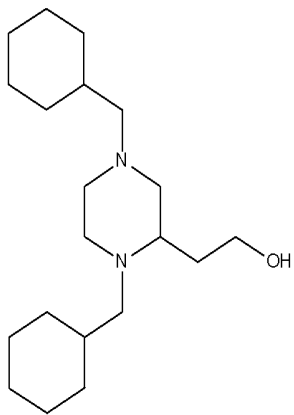
Peak #	RetTime [min]	Type	Width [min]	Area [mV*s]	Height [mV]	Area %
1	1.467	MF	0.0210	16.97118	13.43950	1.2484
2	1.510	FM	0.0560	1307.21277	388.90994	96.1557
3	1.726	BV	0.0467	4.43043	1.30122	0.3259
4	1.794	VV	0.0478	11.58710	3.57483	0.8523
5	1.872	VV	0.0458	5.87489	1.72259	0.4321
6	1.973	VB	0.0390	12.24582	4.76025	0.9008
7	2.530	PB	0.0299	1.15318	5.88122e-1	0.0848
Totals :				1359.47537	414.29645	

Signal 2: MSD1 TIC, MS File

Peak #	RetTime [min]	Type	Width [min]	Area	Height	Area %
1	1.482	MF	0.0281	7.81007e6	4.62822e6	8.6046
2	1.527	MF	0.0930	8.29566e7	1.48733e7	91.3954
Totals :				9.07667e7	1.95015e7	



PH10113903



ID 92804720 322.5387 C₂₀H₃₈N₂O



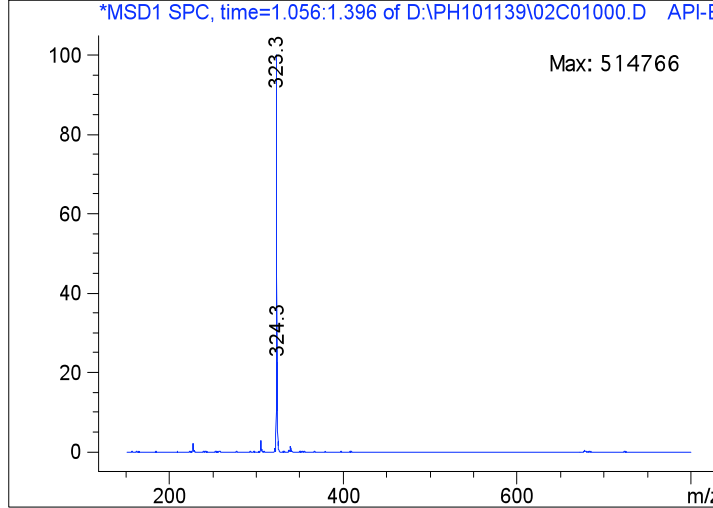
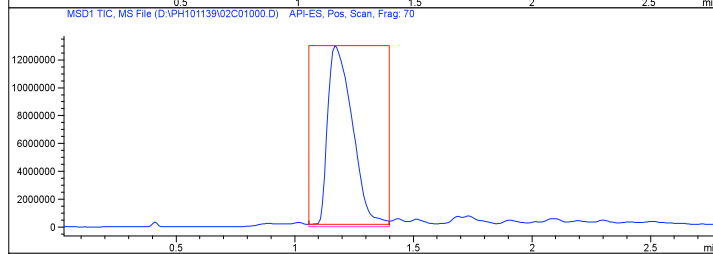
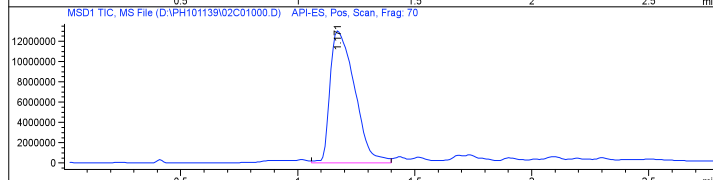
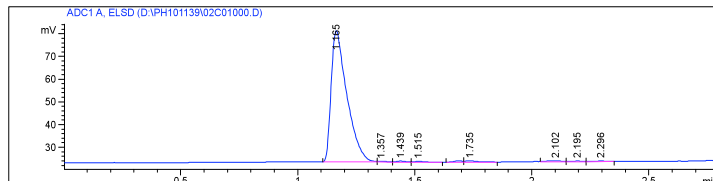
Data File D:\PH101139\02C01000.D Sample Name: PH101139C01
 Instrument 1 12/01/2005 11:54:09
 Column: SpeedROD Rp-18e 50x4.6mm | 3.5ml/min | Columns Reg Valve
 Gradient: "A"->@2.5min->"B" (Hold 0.4min)->@0.1min->"A"->PostRun
 PMP1, Solvent A : 0.1% TFA in AcN/Water (5:95)
 PMP1, Solvent B : 0.1% TFA in AcN
 PMP1, Solvent C : 10mM CH3COONH4 in AcN/Water (2.5:75.5)
 PMP1, Solvent D : 10mM CH3COONH4 in AcN/Water (90:10)
 Ionization mode : API-ES Positive

Signal 1: ADC1 A, ELSD

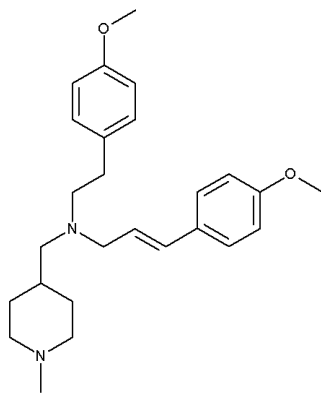
Peak #	RetTime [min]	Type	Width [min]	Area [mV*s]	Height [mV]	Area %
1	1.165	BV	0.0684	269.99576	57.93507	95.9813
2	1.357	VV	0.0387	1.06524	3.92319e-1	0.3787
3	1.439	VV	0.0408	1.23922	4.54076e-1	0.4405
4	1.515	VP	0.0416	9.29685e-1	3.42753e-1	0.3305
5	1.687	BV	0.0357	1.41512	5.95950e-1	0.5031
6	1.735	VP	0.0515	2.21409	6.07865e-1	0.7871
7	2.102	BV	0.0589	2.28588	5.04100e-1	0.8126
8	2.195	VV	0.0446	1.06654	3.31233e-1	0.3791
9	2.296	VP	0.0485	1.08882	2.98860e-1	0.3871
Totals :				281.30036	61.46222	

Signal 2: MSD1 TIC, MS File

Peak #	RetTime [min]	Type	Width [min]	Area	Height	Area %
1	1.171	VV	0.1163	9.47172e7	1.30174e7	100.0000
Totals :				9.47172e7	1.30174e7	



PH10245332



ID	95756108	408.5890	C ₂₆ H ₃₆ N ₂ O ₂

Data File R:\AUTO\PH102453\2HD-5401.D
 Sample Name: PH102453P2-H-04
 Instrument 1 14/06/2006 13:57:06
 Column: Chromolith SpeedROD C18 50x4.6mm | 3.75ml/min
 Gradient: "A"->@2.4min->"B"(Hold 0.3min)->@0.1min->"A"->PostRun
 PMP1, Solvent A : 0.1% TFA in AcN/Water (5:95)
 PMP1, Solvent B : 0.1% TFA in AcN
 PMP1, Solvent C : 10mM CH3COONH4 in AcN/Water (2.5:75.5)
 PMP1, Solvent D : 10mM CH3COONH4 in AcN/Water (90:10)
 Ionization mode : APCI Positive

Signal 1: ADC1 A, ELSD

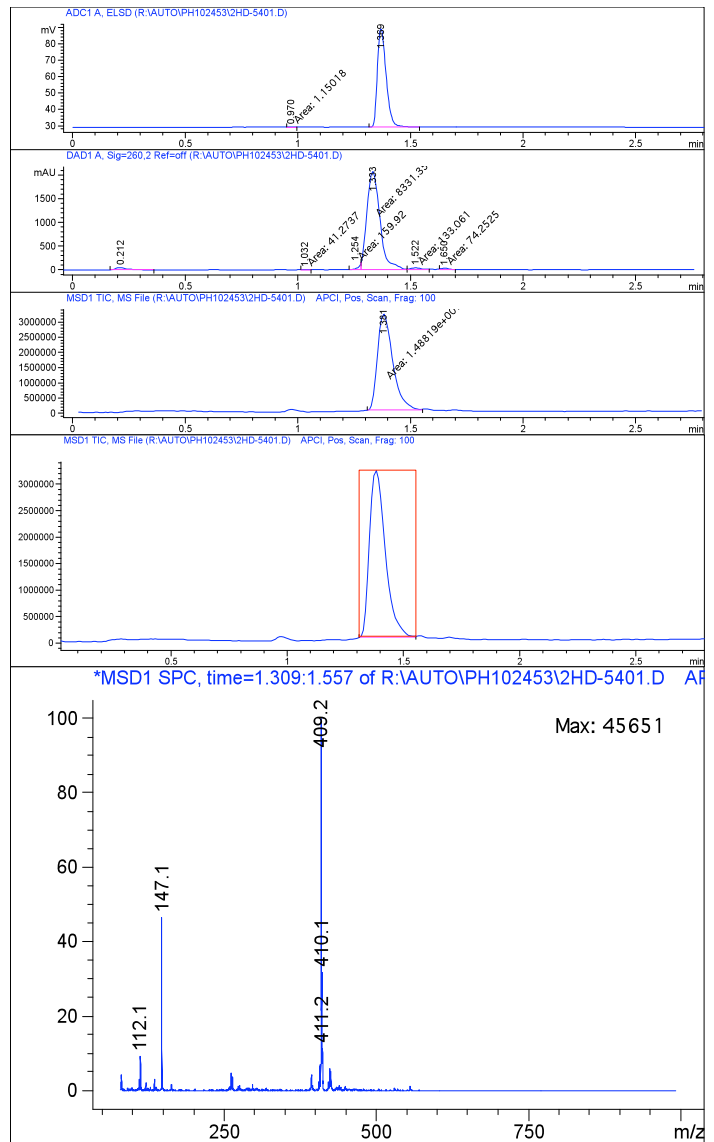
Peak #	RetTime [min]	Type	Width [min]	Area [mV*s]	Height [mV]	Area %
1	0.970	MM	0.0384	1.15018	4.98654e-1	0.7033
2	1.369	BP	0.0415	162.38211	60.09868	99.2967
Totals :				163.53229	60.59733	

Signal 2: DAD1 A, Sig=260,2 Ref=off

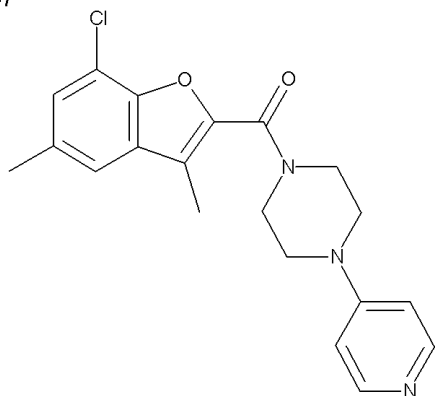
Peak #	RetTime [min]	Type	Width [min]	Area [mAU*s]	Height [mAU]	Area %
1	0.212	BP	0.0514	157.87228	46.79924	1.7743
2	1.032	MM	0.0393	41.27371	17.50350	0.4639
3	1.254	MF	0.0208	159.91997	128.36288	1.7973
4	1.333	MF	0.0668	8331.34863	2077.47168	93.6346
5	1.522	FM	0.0557	133.06096	39.82582	1.4954
6	1.650	MM	0.0408	74.25254	30.32634	0.8345
Totals :				8897.72809	2340.28946	

Signal 3: MSD1 TIC, MS File

Peak #	RetTime [min]	Type	Width [min]	Area	Height	Area %
1	1.381	MM	0.0785	1.48819e7	3.15943e6	100.0000
Totals :				1.48819e7	3.15943e6	



PH10197147



ID	95809153	369.8543	C ₂₀ H ₂₀ ClN ₃ O ₂

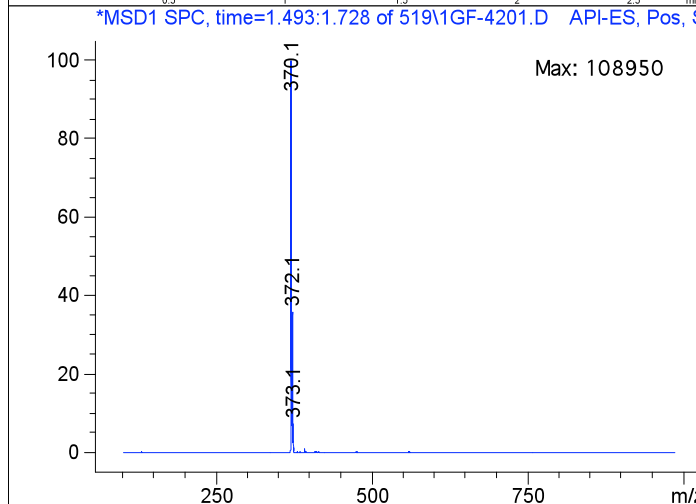
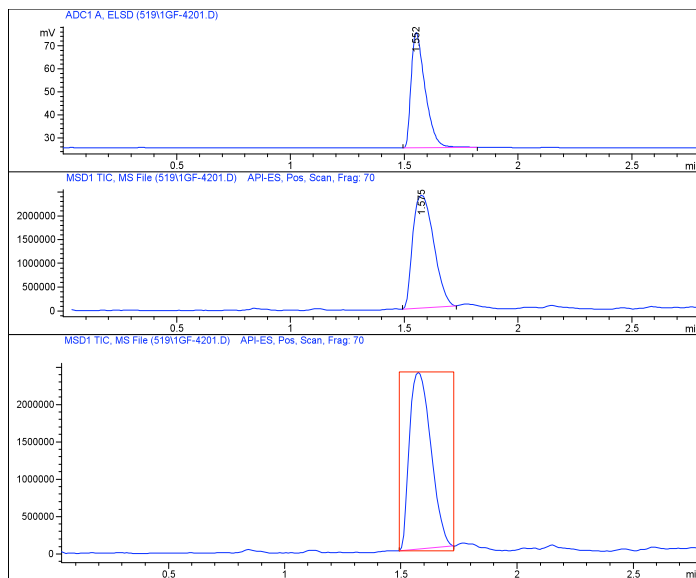
Data File d:\LCMS\Batch73\519\1GF-4201.D
 Sample Name: PH101971P1-G-06
 Instrument 1 23/11/2005 06:35:50 LCMS#1
 Column: Chromolith SpeedROD C18 50x4.6mm | 3.75ml/min
 Gradient: "A"->@2.2min->"B"(Hold 0.5min)->@0.1min->"A"->PostRun
 PMP1, Solvent A : 0.1% TFA in AcN/Water (5:95)
 PMP1, Solvent B : 0.1% TFA in AcN
 PMP1, Solvent C : 10mM CH3COONH4 in AcN/Water (2.5:75.5)
 PMP1, Solvent D : 10mM CH3COONH4 in AcN/Water (90:10)
 Ionization mode : API-ES Positive

Signal 1: ADC1 A, ELSD

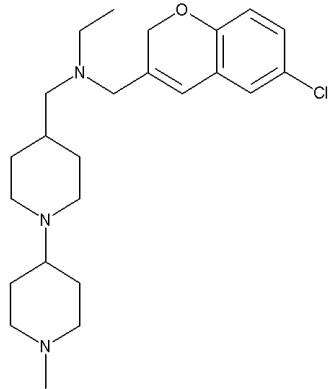
Peak #	RetTime [min]	Type	Width [min]	Area [mV*s]	Height [mV]	Area %
1	1.552	PB	0.0654	216.71217	50.16454	100.0000
Totals :				216.71217	50.16454	

Signal 2: MSD1 TIC, MS File

Peak #	RetTime [min]	Type	Width [min]	Area	Height	Area %
1	1.575	PBA	0.1072	1.51623e7	2.36825e6	100.0000
Totals :				1.51623e7	2.36825e6	



PH10250120



ID	97539032	418.0270	C ₂₄ H ₃₆ ClN ₃ O

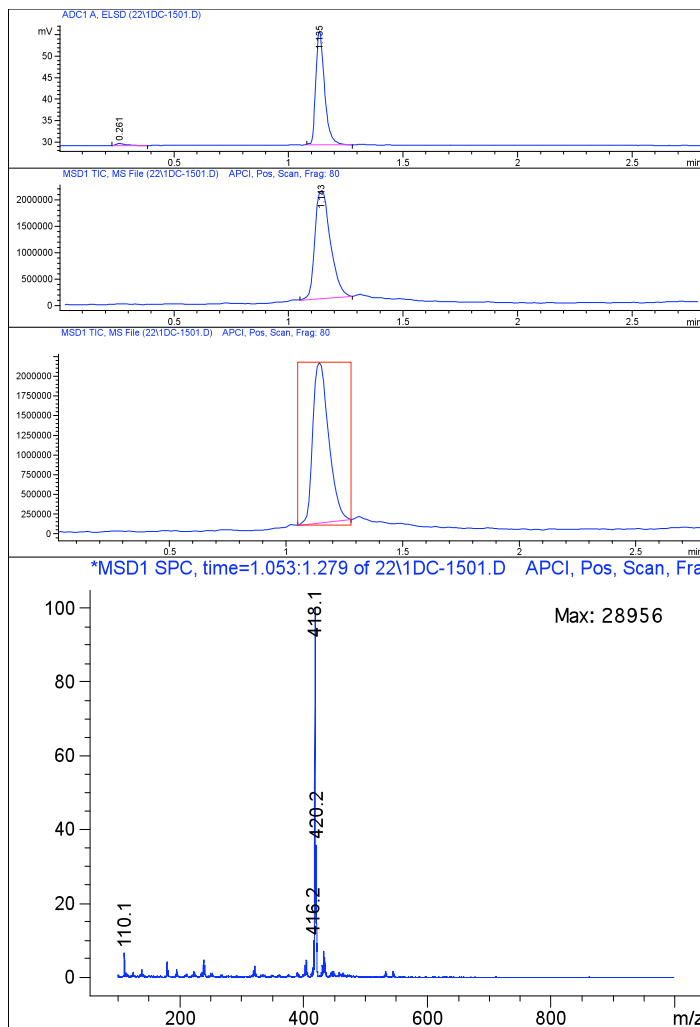
Data File D:\LCMS4\22\1DC-1501.D
 Sample Name: PH102501Pl-D-03
 Instrument 1 17/06/06 09:25:00 lcms#4
 Column: Chromolith SpeedROD C18 50x4.6mm | 3.75ml/min
 Gradient: "A"->@2.4min->"B"(Hold 0.3min)->@0.1min->"A"->PostRun
 PMP1, Solvent A : 0.1% TFA in AcN/Water (5:95)
 PMP1, Solvent B : 0.1% TFA in AcN
 PMP1, Solvent C : 10mM CH3COONH4 in AcN/Water (2.5:75.5)
 PMP1, Solvent D : 10mM CH3COONH4 in AcN/Water (90:10)
 Ionization mode : APCI Positive

Signal 1: ADC1 A, ELSD

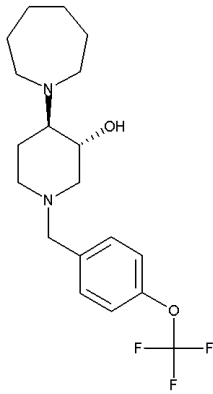
Peak #	RetTime [min]	Type	Width [min]	Area [mV*s]	Height [mV]	Area %
1	0.261	PP	0.0407	1.34338	4.78856e-1	1.8687
2	1.135	BP	0.0410	70.54423	26.51429	98.1313
Totals :				71.88761	26.99314	

Signal 2: MSD1 TIC, MS File

Peak #	RetTime [min]	Type	Width [min]	Area	Height	Area %
1	1.143	BBA	0.0740	9.62514e6	2.03963e6	100.0000
Totals :				9.62514e6	2.03963e6	



PH10205007



ID	98890620	372.4344	C ₁₉ H ₂₇ F ₃ N ₂ O ₂

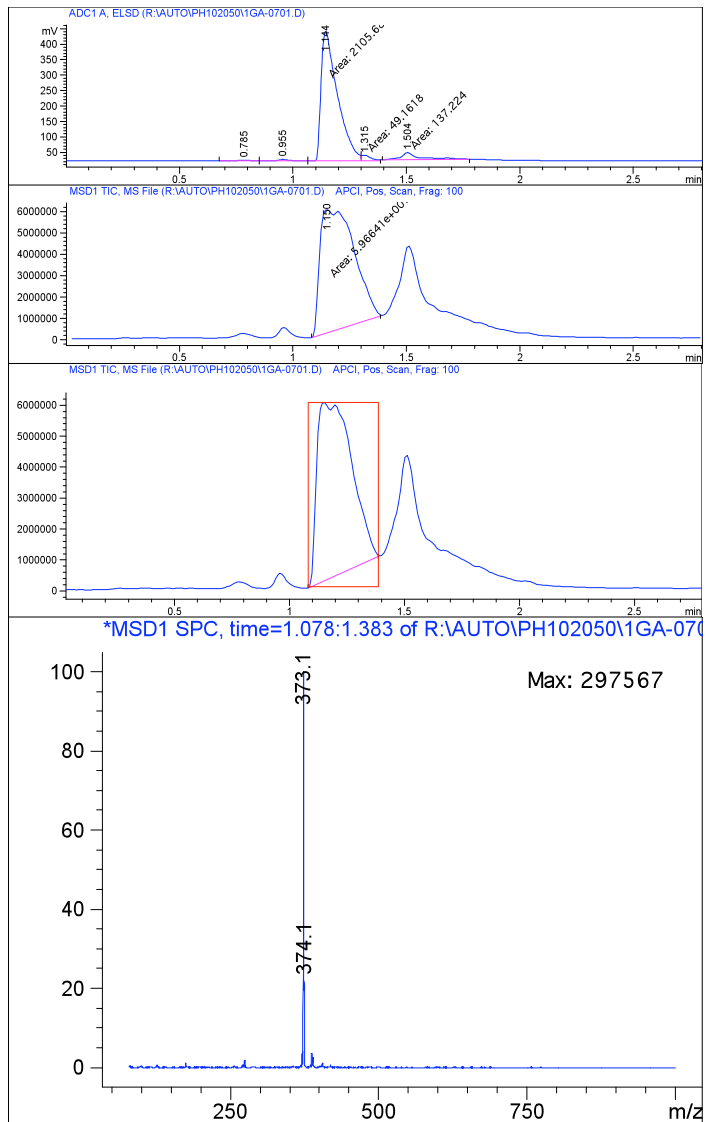
Data File R:\AUTO\PH102050\1GA-0701.D
 Sample Name: PH102050P1-G-01
 Instrument 1 15/02/2006 12:36:56
 Column: Hi-Q 5um C18 50x4.6mm | 3.75ml/min | Columns Reg Valve
 Gradient: "A"->@2.4min->"B"(Hold 0.3min)->@0.1min->"A"->PostRun
 PMP1, Solvent A : 0.1% TFA in AcN/Water (5:95)
 PMP1, Solvent B : 0.1% TFA in AcN
 PMP1, Solvent C : 10mM CH3COONH4 in AcN/Water (2.5:75.5)
 PMP1, Solvent D : 10mM CH3COONH4 in AcN/Water (90:10)
 Ionization mode : APCI Positive

Signal 1: ADC1 A, ELSD

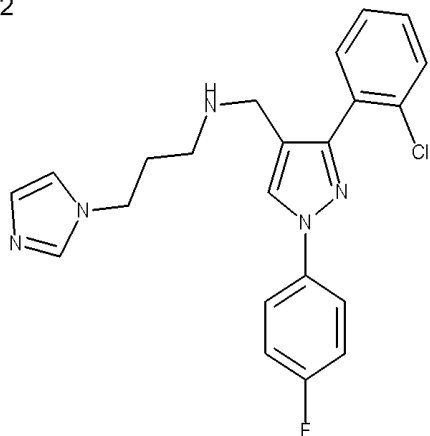
Peak #	RetTime [min]	Type	Width [min]	Area [mV*s]	Height [mV]	Area %
1	0.785	BV	0.0736	3.55564	6.95779e-1	0.1542
2	0.955	VV	0.0427	10.15850	3.62327	0.4406
3	1.144	MF	0.0837	2105.67798	419.14041	91.3218
4	1.315	FM	0.0477	49.16175	17.17783	2.1321
5	1.504	MM	0.0996	137.22423	22.95292	5.9513
Totals :				2305.77811	463.59021	

Signal 2: MSD1 TIC, MS File

Peak #	RetTime [min]	Type	Width [min]	Area	Height	Area %
1	1.150	MM	0.1714	5.96641e7	5.80057e6	100.0000
Totals :				5.96641e7	5.80057e6	



PH10031002



ID	99045607	409.8976	C ₂₂ H ₂₁ ClFN ₅
----	----------	----------	---



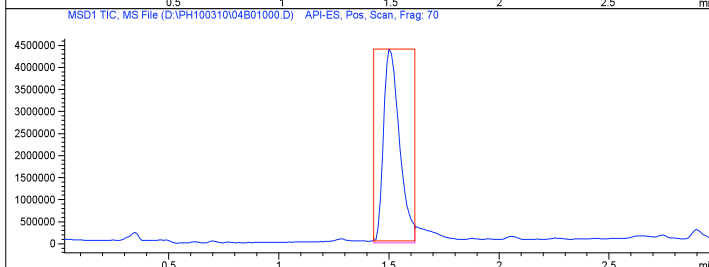
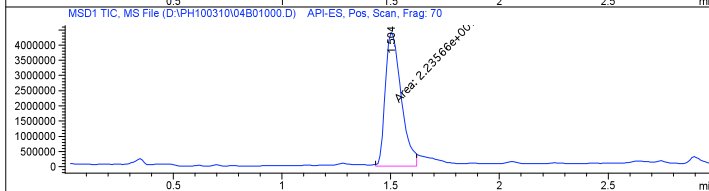
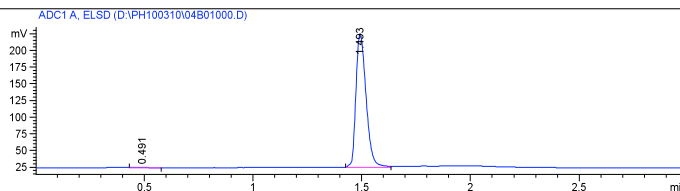
Data File D:\PH100310\04B01000.D Sample Name: PH100310B01
 Instrument 1 05/04/2004 16:02:35
 Column: Chromolith SpeedROD 50x4.6mm | Flow Rate: 3.0ml/min
 Gradient: "A"->@2.0min->"B" (Hold 1.0min)->@0.5min->"A"->PostRun
 PMP1, Solvent A : 0.1% TFA in AcN/Water (5:95)
 PMP1, Solvent B : 0.1% TFA in AcN
 PMP1, Solvent C : 10mM CH₃COONH₄ in AcN/Water (2.5:97.5)
 PMP1, Solvent D : 10mM CH₃COONH₄ in AcN/Water (90:10)
 Ionization mode : API-ES Positive

Signal 1: ADC1 A, ELSD

Peak #	RetTime [min]	Type	Width [min]	Area [mV*s]	Height [mV]	Area %
1	0.491	BP	0.0483	7.75107e-1	2.19170e-1	0.1185
2	1.493	PV	0.0510	653.35260	200.75969	99.8815
Totals :				654.12771	200.97886	

Signal 2: MSD1 TIC, MS File

Peak #	RetTime [min]	Type	Width [min]	Area	Height	Area %
1	1.504	MM	0.0842	2.23566e7	4.42424e6	100.0000
Totals :				2.23566e7	4.42424e6	



*MSD1 SPC, time=1.431:1.622 of D:\PH100310\04B01000.D

